

KFPS STALLION INFORMATION 2010



BESCHERMVROUWE
H.M. KONINGIN BEATRIX



This 2010 Stallion Information is being presented to you as an aid in choosing a stallion. When choosing a stallion it is not just important to use the best-quality stallions but it is even more important to make the correct combinations. The KFPS strives to make as many breeding data on its stallions available as possible.

WHICH STALLIONS?

The stallions included in this edition are stallions that have been approved on offspring. Also the stallions have to be alive or be available by means of frozen semen.

WHICH CHARACTERISTICS?

The following characteristics of the stallions are included.

1. Number/percentage of mares with the star predicate.
2. Breeding value linear exterior characteristics.
3. Breeding values for sport aptitude.

BREEDING VALUES EXTERIOR AND SPORT APTITUDE

Given the complexity of the breeding-value estimation for the exterior characteristics and sport aptitude an explanation of the origins and the interpretation of the numbers is necessary. In this explanation we also touch upon how the numbers can be used for choosing a stallion.

THE LINEAR CHARACTERISTICS

The breeding values for the exterior characteristics are based on the linear scores, which since 1993 are documented for every studbook registration of the horses. Of the 25 exterior characteristics a score is given between 5 and 45, with as the average 25. In this edition for the first time the breeding values of the "new" linear characteristics are included: length of the neck, body (uphill/downhill), and the trot characteristics balance and suppleness. For the linear characteristics it specifically concerns an observation and not a rating. The characteristics have been chosen such that the linear report provides a picture of the horse's exterior that is as complete as possible. The breeding value estimation of the rated exterior numbers (breed type, built legs, walk, and trot) is currently being worked on. The linear characteristics can be divided in two categories.

1. The optimal characteristics: the characteristics for which the average score (25) or breeding value (100) is most desired. Examples of such characteristics are: shape of the back, conformation of the front legs, and shape of the hind legs.
2. Maximum characteristics: the characteristics for which goes the higher the better (example: expression of the face, expression of movement, etc.) or characteristics of which the optimum lies clearly above average, such as slope of the shoulder and shape of the croup.

The difference has been visualized by depicting the breeding values for the maximum characteristics with dark-blue bars (favorable) and red bars

(unfavorable), and the breeding values for the optimum characteristics with light-blue bars. In addition to the 25 linear characteristics the overview consists of a measured characteristic: the height at the withers.

THE RATED CHARACTERISTICS

In addition to the 25 linear exterior characteristics also five rated characteristics are scored: breed type, build, legs, walk, and trot. For the linear characteristics it concerns a descriptive value, for the rated characteristics it concerns a rating. When evaluating the rated exterior characteristics the related linear characteristics play an important role. In addition non-linear scored segments can play a role. The characteristic trot, e.g., consists in addition to the linear characteristics length of the trot, strength of the trot, balance, and suppleness also of, e.g., rhythm/regularity of the trot. The rated characteristics are scored from 3 through 10.

SPORT APTITUDE

The breeding values are based on the ABFP results as these have been gathered by KFPS over the years, also as part of the testing on offspring. The reason that this particular data is used for the breeding-value estimation instead of, e.g. sport results, is the following.

1. ABFP information is available much earlier than sport data.
2. ABFP data is for a larger part hereditary (higher h^2) than sport data. That is thanks to the uniform training, presentation, and evaluation.
3. Number of offspring per stallion in sport is in general (still) too low.
4. The ABFP data gives information on segments (basic gaits, suitability as show-driving horses, riding horses, and driving horses).

THE ESTIMATION MODEL

The breeding values, estimated by the Nederlands Rundvee Syndicaat (NRS)/Dutch Cattle Syndicate, are estimated with a so-called estimation model. This estimation model indicates for which influences the differences between (in this case) stallions are corrected. The exterior scores are corrected for the following effects: breeding value of the dam of the offspring, age at the time of inspection, gender, linear evaluator, and inspection. This correction takes place to get as pure an insight as possible in to what degree the differences in offspring groups are caused by difference in genetic aptitude of the stallions. With these correction factors it basically does not matter in what area or on what mares a certain stallion is used. The kind of evaluation model that is being used is the so-called animal model. With an animal model in addition to data on offspring also information of family members is included. The contribution of this information declines as more information on the offspring becomes available.

INTERPRETATION OF THE BREEDING VALUES

The breeding values are indicated in an average of 100 with a spread of 4 points. This basis was determined based on 2001. The average bree-

ding values of all horses born in 2001 is for each characteristic set at 100 and the spread (standard deviation) of these breeding values is set at 4. Breeding values with a deviation compared to 100 of one time the spread (between 96 and 104) have to be considered as average.

Over two thirds of the breeding values are in this margin. It goes without saying that the larger the deviation is compared to 100, the larger the expected effect is. A stallion with a breeding value of 109 or higher for, e.g., strength of movement, belongs to the 2% best stallions of the population. For a breeding value higher than 112 this is 0.1%.

or the most recently published index the basis has been changed from 1991 to 2001. Given the fact that for most characteristics in this period of ten years the horses have improved genetically the stallions that already had breeding values have gone down a few index points. This decrease is equal for all stallions so that the ranking set forth by the base adjustment does not change.

DEPICTION OF THE BREEDING VALUES

The breeding values are indicated per characteristic with "bars." As mentioned the maximum characteristics are indicated by dark-blue bars (favourable) and red bars (unfavourable) and the optimal characteristics by light-blue bars. For the maximum characteristics goes that results to the left are unfavourable (red) and results to the right are favourable (dark-blue). For the optimal characteristics goes that (extreme) results to both the left and right are unfavourable; 100 is optimal here.

RELIABILITY

The degree to which the breeding value provides a precise image of the actual genetic aptitude of a stallion is expressed in the reliability (betrouwbaarheid / btbh.). The reliability is especially influenced by the number of inspected offspring. With a low reliability the breeding values can still change considerably when more offspring are inspected. The reliability can be interpreted as follows.

Reliability	Interpretation
Less than 70%	moderately reliable
70-80%	reasonably reliable
80-90%	reliable
Over 90%	very reliable

USE OF THE EXTERIOR BREEDING VALUES

The exterior breeding values are an excellent aid for making a correct mare-stallion combination. This can be done by looking at the mare's linear score form for the items that can be considered for correction. If the characteristic that needs to be corrected is a maximum characteristic then a stallion needs to be selected that has a (clearly) positive hereditary effect on this characteristic (bar to the right). If it concerns an optimal characteristic then the best choice is a stallion with an average breeding value

or a slight deviation in the opposite direction, depending on the score of the mare. A common misunderstanding is that when a mare scores, e.g., a 5 for the shape of the hind leg, is combined with a stallion that is rated 112 for this characteristic the offspring would have an average shape of the hind leg. For optimal characteristics stallions with a breeding value around 100 are recommended.

USE OF THE BREEDING VALUES FOR SPORT APTITUDE

As you can see breeding values have been estimated for the basic gaits in the exterior bar and in the sport aptitude bar. The former is based on the evaluation of the basic gaits in the inspection ring (in hand), while the latter is based on the evaluation of the basic gaits in use (ABFP test). For most of the stallions these breeding values largely match. There are, however, stallions that have a breeding value for the basic gaits in the sport index that is quite a bit lower than the breeding value for the basic gaits in the exterior bar. Given the fact that the breeding goal indicates that we want to breed horses that have good gaits in especially their use the breeding values for sport aptitude should weigh more heavily in your evaluation of the stallions.

KINSHIP PERCENTAGE

The kinship percentage of the studbook stallions is listed. This number indicates the relationship of a stallion with the population. The lower the number, the higher the contribution is that such a stallion can make to blood distribution. The average percentage of the studbook stallions is approximately 17.6%. The kinship percentage is calculated by calculating the inbreeding of fictitious foals of the combination of all individual stallions with the mare population. The mare population is in this defined as all fillies born in the year 2006, in total over 3000 horses. Included in the inbreeding calculation are all known generations (so not just the first five generations).

The kinship percentage is influenced by the level in which the lineage matches or deviates from the population. As a stallion is used more the kinship percentage will increase. The kinship percentage is one of the characteristics that is part of the selection of young stallions with as the goal to limit the increase in inbreeding. For the first time a correction has been made for missing pedigree information in the calculations of the kinship percentage in this publication. As a result the kinship percentage for stallions with a "short dam line" has been adjusted upward.

STALLION INFORMATION ONLINE

On the KFPS website (www.kfps.nl) a free digital version of the Stallion Information has been included in the member section. Here you will find even more detailed information about the stallions. Moreover, you may make stallion selections by indicating selection criteria. In the digital version of the Stallion Information are also included the stallions that have not yet participated in the testing on offspring.

Feitse 293

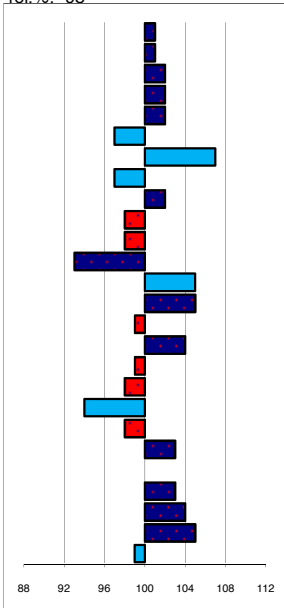
stb198302931
geb.: 28-5-1983
s.: Jochem
m.: Lysebet

marks allowed: 10,0%
not allowed: 2,7%
mgs mggs
Bjinsé Noldus

linear conformation

rel.%: 98

101 plain
101 heavy
102 short
102 horizontal
102 steep
97 weak
107 weak
97 horizontal
102 short
98 downhill
98 short
93 straight
105 sickled
105 short
99 small
104 course
99 faded black
98 little
94 toeing-in
98 short
103 weak
100 short
103 weak
104 little
105 little
99 short



noble
light
long
vertical
sloping
tight
tight
sloping
long
upstanding
long
standing under
straight
long
large
dry
jet black
much
toeing-out
long
powerful
long
powerful
much
much
tail

head
head-neck-conn.
neck length
neck position
shoulder
back
loins
croup shape
croup length
body
length forearm
frontlegs
hindlegs
pasterns
hooves
bone quality
color
hair
walk
walk length
walk strength
trot length
trot strength
balance
suppleness
size

major breakdown traits

type	frame	f & l		walk		trot	total
ABFP	103	104	104	102	103	103	103
rel.%	walk	trot	canter	riding	driving	showdr.	total
88	98	100	99	100	100	103	100

Gerlof 294

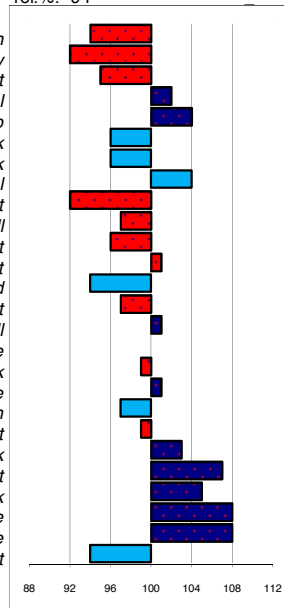
stb198402941
geb.: 10-4-1984
s.: Hearke
m.: Hendrina

marks allowed: 5,4%
not allowed: 0,3%
mgs mggs
Ulrig Ritske

linear conformation

rel.%: 94

94 plain
92 heavy
95 short
102 horizontal
104 steep
96 weak
96 weak
104 horizontal
92 short
97 downhill
96 short
101 straight
94 sickled
97 short
101 small
100 course
99 faded black
101 little
97 toeing-in
99 short
103 weak
107 short
105 weak
108 little
108 little
94 short



noble
light
long
vertical
sloping
tight
tight
sloping
long
upstanding
long
standing under
straight
long
large
dry
jet black
much
toeing-out
long
powerful
long
powerful
much
much
tail

major breakdown traits

type	frame	f & l		walk		trot	total
ABFP	98	97	101	102	104	104	101
rel.%	walk	trot	canter	riding	driving	showdr.	total
76	97	105	102	102	102	104	102

Jillis 301

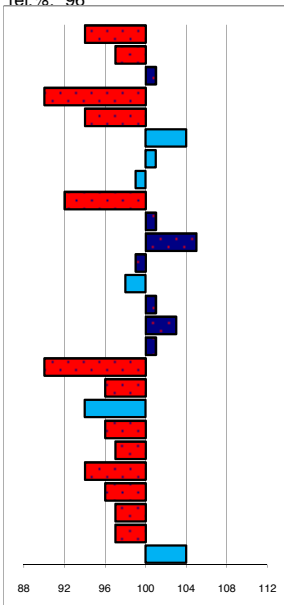
stb198503011
geb.: 19-3-1985
s.: Jochem
m.: Geesje

marks allowed: 3,3%
not allowed: 1,0%
mgs mggs
Freark Jetse

linear conformation

rel.%: 96

94 plain
97 heavy
101 short
90 horizontal
94 steep
104 weak
101 weak
99 horizontal
92 short
101 downhill
105 short
99 straight
98 sickled
101 short
103 small
101 course
90 faded black
96 little
94 toeing-in
96 short
97 weak
94 short
96 weak
97 little
97 little
104 short



noble
light
long
vertical
sloping
tight
tight
sloping
long
upstanding
long
standing under
straight
long
large
dry
jet black
much
toeing-out
long
powerful
long
powerful
much
much
tail

head
head-neck-conn.
neck length
neck position
shoulder
back
loins
croup shape
croup length
body
length forearm
frontlegs
hindlegs
pasterns
hooves
bone quality
color
hair
walk
walk length
walk strength
trot length
trot strength
balance
suppleness
size

major breakdown traits

type	frame	f & l		walk		trot	total
ABFP	92	97	99	98	97	96	96
rel.%	walk	trot	canter	riding	driving	showdr.	total
86	95	97	97	97	97	100	97

Jakob 302

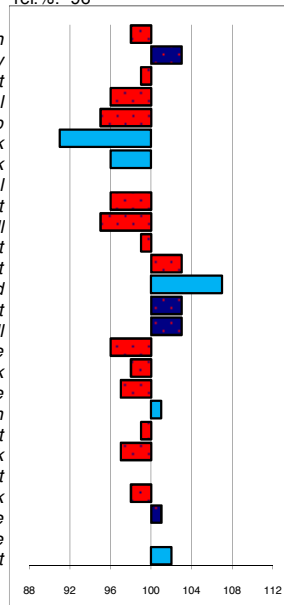
stb198503021
geb.: 22-4-1985
s.: Naen
m.: Tunke

marks allowed: 3,6%
not allowed: 1,0%
mgs mggs
Mark Gerke

linear conformation

rel.%: 96

98 plain
103 heavy
99 short
96 horizontal
95 steep
91 weak
96 weak
100 horizontal
96 short
95 downhill
99 short
103 straight
107 sickled
103 short
103 small
96 course
98 faded black
97 little
101 toeing-in
99 short
97 weak
100 short
98 weak
101 little
100 little
102 short



noble
light
long
vertical
sloping
tight
tight
sloping
long
upstanding
long
standing under
straight
long
large
dry
jet black
much
toeing-out
long
powerful
long
powerful
much
much
tail

major breakdown traits

type	frame	f & l		walk		trot	total
ABFP	97	95	95	98	98	97	97
rel.%	walk	trot	canter	riding	driving	showdr.	total
85	104	107	105	107	105	103	105

Jurjen 303

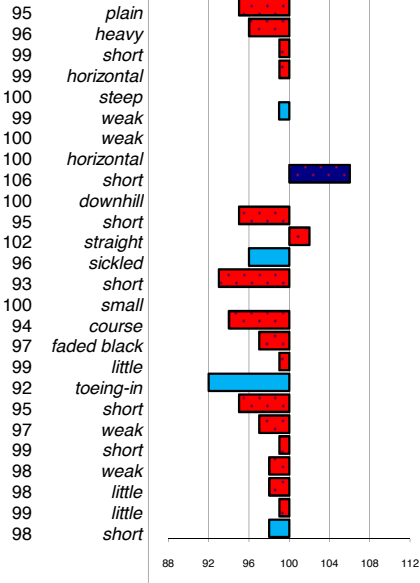
stb198503031
geb.: 25-5-1985
s.: Teake
m.: Tiny

marks allowed: 0,8%
not allowed: 0,2%

mgs Wessel
mggs Ewold

linear conformation

rel.%: 97



noble head
light head-neck-conn.
long neck length
vertical neck position
sloping shoulder
tight back
tight loins
sloping croup shape
long croup length
upstanding body
long length forearm
standing under frontlegs
straight hindlegs
long pasterns
large hooves
dry bone quality
jet black color
much hair
toeing-out walk
long walk length
powerful walk strength
long trot length
powerful trot strength
much balance
much suppleness
tall size

major breakdown traits

type	frame	f & l			walk	trot	total
97	97	97			97	99	98
ABFP							
rel.%	walk	trot	canter	riding	driving	showdr.	total
87	99	99	98	98	98	97	98

Lute 304

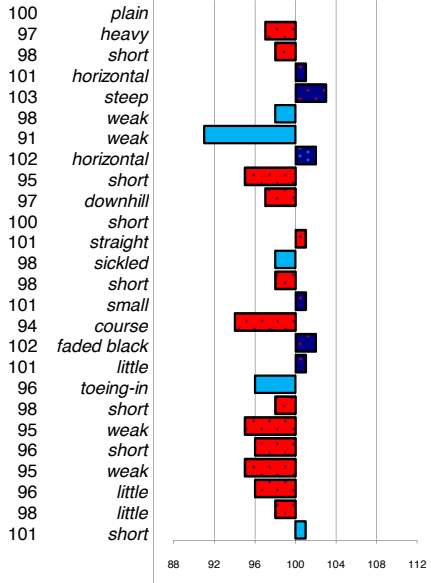
stb198603041
geb.: 4-5-1986
s.: Djurre
m.: Ankje

ster: 61 marks allowed: 2,3%
21,6% not allowed: 0,1%

mgs Hearke
mggs Hotse

linear conformation

rel.%: 96



noble head
light head-neck-conn.
long neck length
vertical neck position
sloping shoulder
tight back
tight loins
horizontal croup shape
short croup length
downhill body
short length forearm
straight frontlegs
sickled hindlegs
short pasterns
small hooves
course bone quality
faded black color
little hair
toeing-in walk
short walk length
weak walk strength
short trot length
weak trot strength
little balance
little suppleness
short size

major breakdown traits

type	frame	f & l			walk	trot	total
98	98	96			97	96	97
ABFP							
rel.%	walk	trot	canter	riding	driving	showdr.	total
78	100	98	98	97	100	98	99

Ludse 305

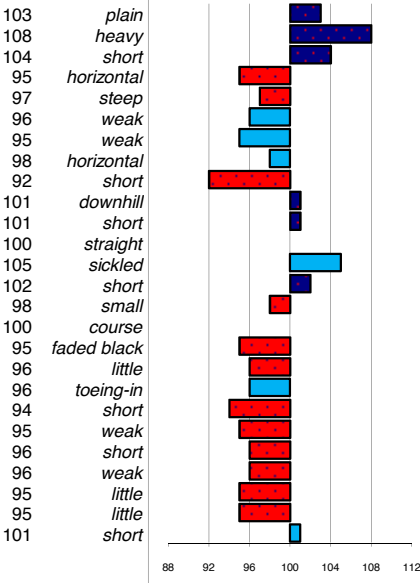
stb198603051
geb.: 8-4-1986
s.: Naen
m.: Anke S.

marks allowed: #####
not allowed: 2,0%

mgs Jochem
mggs Ritske

linear conformation

rel.%: 91



noble head
light head-neck-conn.
long neck length
vertical neck position
sloping shoulder
tight back
tight loins
sloping croup shape
long croup length
upstanding body
long length forearm
standing under frontlegs
straight hindlegs
long pasterns
large hooves
dry bone quality
jet black color
much hair
toeing-out walk
long walk length
powerful walk strength
long trot length
powerful trot strength
much balance
much suppleness
tall size

major breakdown traits

type	frame	f & l			walk	trot	total
96	97	98			95	97	96
ABFP							
rel.%	walk	trot	canter	riding	driving	showdr.	total
48	98	97	98	98	96	96	97

Leffert 306

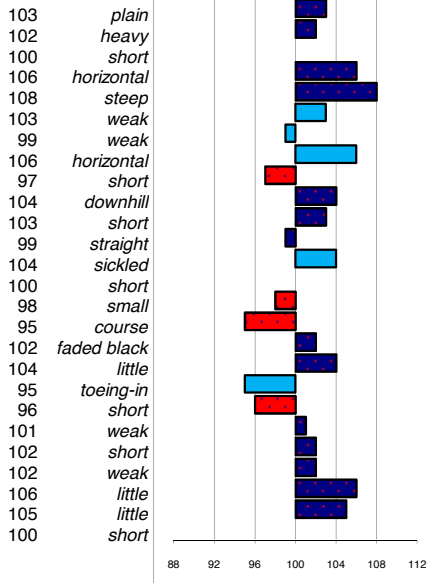
stb198603061
geb.: 27-4-1986
s.: Tamme
m.: Bontsje

marks allowed: 0,7%
not allowed: 0,3%

mgs Oepke
mggs Ritske

linear conformation

rel.%: 98



noble head
light head-neck-conn.
long neck length
vertical neck position
sloping shoulder
tight back
tight loins
horizontal croup shape
short croup length
downhill body
short length forearm
straight frontlegs
sickled hindlegs
short pasterns
small hooves
course bone quality
faded black color
little hair
toeing-in walk
short walk length
weak walk strength
short trot length
weak trot strength
little balance
little suppleness
short size

major breakdown traits

type	frame	f & l			walk	trot	total
107	105	99			101	103	103
ABFP							
rel.%	walk	trot	canter	riding	driving	showdr.	total
91	97	101	100	100	102	103	100

Melle 311

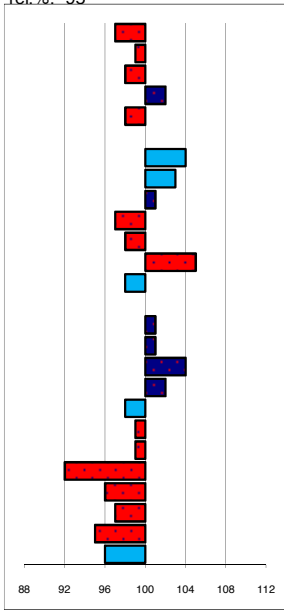
stb198703111
geb.: 25-4-1987
s.: Frans
m.: Woltje

marks allowed: 0,7%
not allowed: 0,4%
mgs Ygram
mggs Hotse

linear conformation

rel.%. 95

97 plain
99 heavy
98 short
102 horizontal
98 steep
100 weak
104 weak
103 horizontal
101 short
97 downhill
98 short
105 straight
98 sickled
100 short
101 small
101 course
104 faded black
102 little
98 toeing-in
99 short
99 weak
92 short
96 weak
97 little
95 little
96 short



noble
light
long
vertical
sloping
shoulder
tight
loins
sloping
croup shape
long
upstanding
long
standing under
straight
long
large
dry
jet black
much
toeing-out
long
powerful
long
powerful
much
much
tall

head
head-neck-conn.
neck length
neck position
shoulder
back
loins
croup shape
croup length
body
length forearm
frontlegs
hindlegs
pasterns
hooves
bone quality
color
hair
walk
walk length
walk strength
trot length
trot strength
balance
suppleness
size

major breakdown traits

type	frame	f & l		walk	trot	total
99	99	100	99	96	98	98
ABFP						
rel.%	walk	trot	canter	riding	driving	showdr.
65	101	99	103	100	99	100
						total
						101

Ouke 313

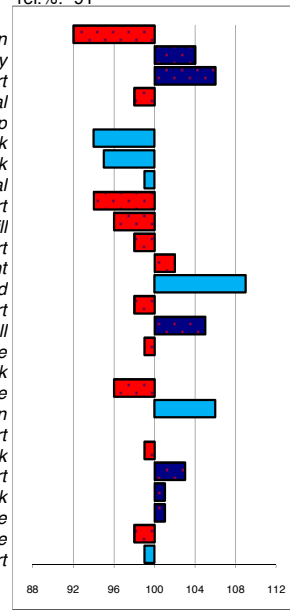
stb198803131
geb.: 7-5-1988
s.: Hearke
m.: Erna

marks allowed: 6,6%
not allowed: 0,9%
mgs Romke
mggs Nammele

linear conformation

rel.%. 91

92 plain
104 heavy
106 short
98 horizontal
100 steep
94 weak
95 weak
99 horizontal
94 short
96 downhill
98 short
102 straight
109 sickled
98 short
105 small
99 course
100 faded black
96 little
106 toeing-in
100 short
99 weak
103 short
101 weak
101 little
98 little
99 short



noble
light
long
vertical
sloping
tight
tight
sloping
long
upstanding
long
standing under
straight
long
large
dry
jet black
much
toeing-in
long
powerful
long
powerful
much
much
tall

major breakdown traits

type	frame	f & l		walk	trot	total
94	95	98	100	101	98	98
ABFP						
rel.%	walk	trot	canter	riding	driving	showdr.
60	100	103	103	102	102	102
						total
						102

Olof 315

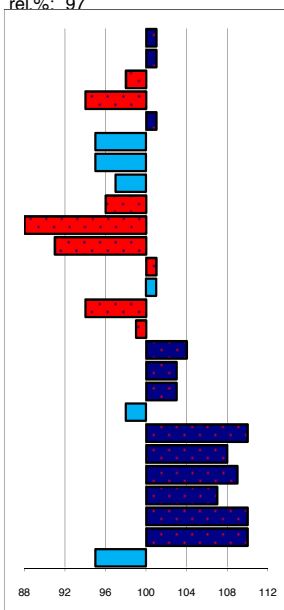
stb198803151
geb.: 3-6-1988
s.: Reitse
m.: Wieneke

marks allowed: 2,1%
not allowed: 0,4%
mgs Lammert
mggs Ysbrand

linear conformation

rel.%. 97

101 plain
101 heavy
98 short
94 horizontal
101 steep
95 weak
95 weak
97 horizontal
96 short
88 downhill
91 short
101 straight
101 sickled
94 short
99 small
104 course
103 faded black
103 little
98 toeing-in
110 short
108 weak
109 short
107 weak
110 little
110 little
95 short



noble
light
long
vertical
sloping
shoulder
tight
loins
sloping
croup shape
long
upstanding
long
standing under
straight
long
large
dry
jet black
much
toeing-out
long
powerful
long
powerful
much
much
tall

head
head-neck-conn.
neck length
neck position
shoulder
back
loins
croup shape
croup length
body
length forearm
frontlegs
hindlegs
pasterns
hooves
bone quality
color
hair
walk
walk length
walk strength
trot length
trot strength
balance
suppleness
size

major breakdown traits

type	frame	f & l		walk	trot	total
99	97	104	107	106	103	103
ABFP						
rel.%	walk	trot	canter	riding	driving	showdr.
88	106	101	103	102	102	102
						total
						103

Sjaard 320

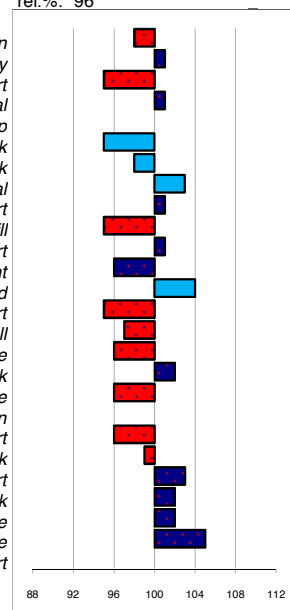
stb198900821
geb.: 8-3-1989
s.: Djurre
m.: Fokeltsje

marks allowed: ####
not allowed: 1,3%
mgs Reitse
mggs Ritske

linear conformation

rel.%. 96

98 plain
101 heavy
95 short
101 horizontal
100 steep
95 weak
98 weak
103 horizontal
101 short
95 downhill
101 short
96 straight
104 sickled
95 short
97 small
96 course
102 faded black
96 little
100 toeing-in
96 short
99 weak
103 short
102 weak
102 little
105 little
100 short



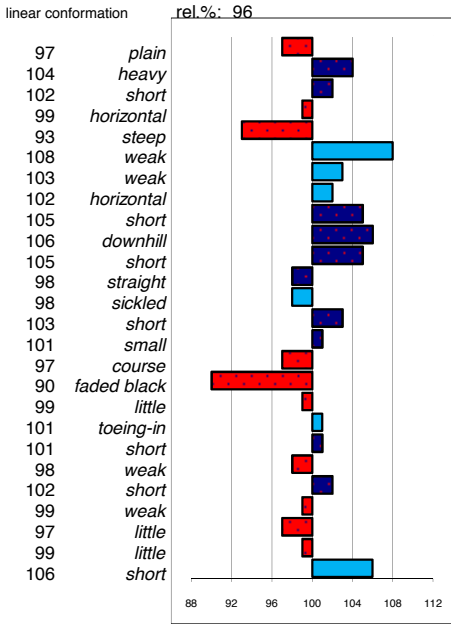
noble
light
long
vertical
sloping
tight
tight
sloping
long
upstanding
long
standing under
straight
long
large
dry
jet black
much
toeing-out
long
powerful
long
powerful
much
much
tall

major breakdown traits

type	frame	f & l		walk	trot	total
98	100	99	98	102	99	99
ABFP						
rel.%	walk	trot	canter	riding	driving	showdr.
72	100	106	103	103	104	104
						total
						103

Rypke 321

stb198904261 marks allowed: 3,4%
 geb.: 1-4-1989 not allowed: 0,6%
 s.: Feitse mgs mggs
 m.: Elsbet ut d Wessel Tsjalling

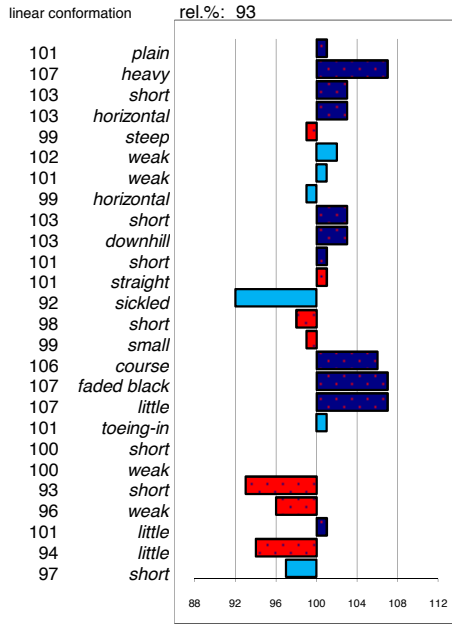


noble head
 light head-neck-conn.
 long neck length
 vertical neck position
 sloping shoulder
 tight back
 tight loins
 sloping croup shape
 long croup length
 uphill body
 downhill length forearm
 straight frontlegs
 long hindlegs
 large pasterns
 dry hooves
 jet black bone quality
 much color
 toeing-out hair
 long walk
 powerful walk length
 long walk strength
 powerful trot length
 powerful trot strength
 much balance
 much suppleness
 tall size

major breakdown traits	type	frame	f & l	walk	trot	total	
ABFP	97	100	99	99	100	99	
rel.%	walk	trot	canter	riding	driving	showdr.	total
	84	98	101	100	101	99	98

Ritse 322

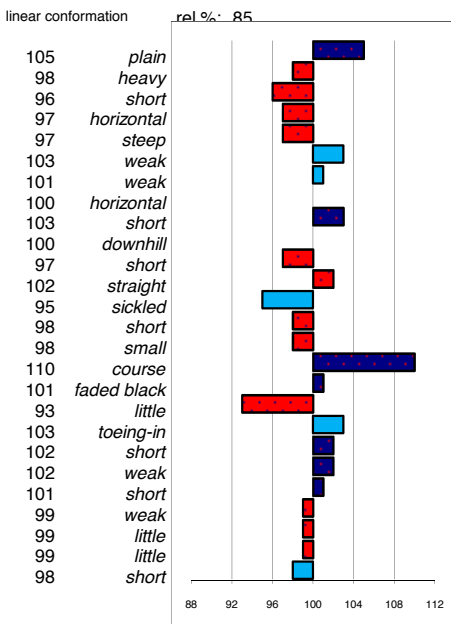
stb198909021 marks allowed: 1,9%
 geb.: 24-5-1989 not allowed: 3,0%
 s.: Oege mgs mggs
 m.: Katterine Hotse Ulrig



major breakdown traits	type	frame	f & l	walk	trot	total	
ABFP	104	102	102	100	98	101	
rel.%	walk	trot	canter	riding	driving	showdr.	total
	50	99	96	97	98	97	98

Lukas 324

stb198603241 marks allowed: 0,4%
 geb.: 01-05-86 not allowed: 1,1%
 s.: Sander mgs mggs
 m.: Aaf Keimpe Wessel

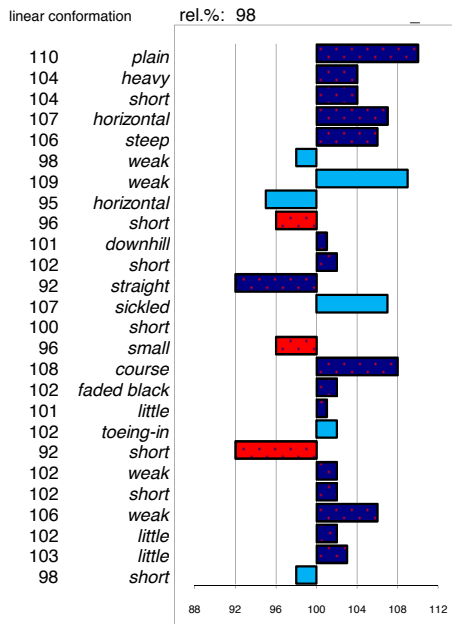


noble head
 light head-neck-conn.
 long neck length
 vertical neck position
 sloping shoulder
 tight back
 tight loins
 sloping croup shape
 long croup length
 uphill body
 downhill length forearm
 straight frontlegs
 long hindlegs
 large pasterns
 dry hooves
 jet black bone quality
 much color
 toeing-out hair
 long walk
 powerful walk length
 long walk strength
 powerful trot length
 powerful trot strength
 much balance
 much suppleness
 tall size

major breakdown traits	type	frame	f & l	walk	trot	total	
ABFP	101	99	105	105	99	102	
rel.%	walk	trot	canter	riding	driving	showdr.	total
	12	102	98	99	100	97	98

Tsjerk 328

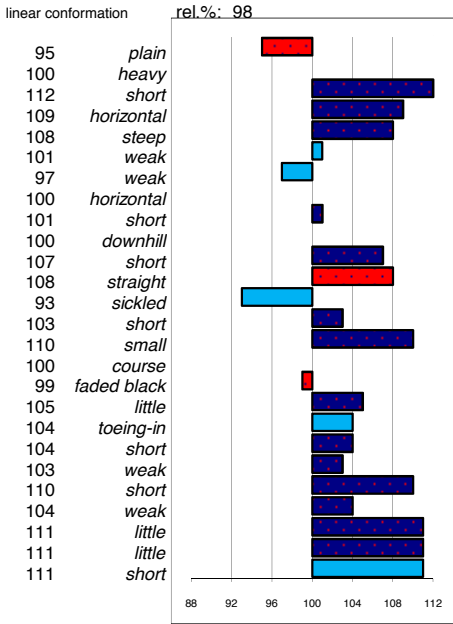
stb199008331 marks allowed: 3,5%
 geb.: 24-3-1990 not allowed: 0,4%
 s.: Feitse mgs mggs
 m.: Wijkje Nanne Hylke



major breakdown traits	type	frame	f & l	walk	trot	total	
ABFP	109	107	107	99	105	105	
rel.%	walk	trot	canter	riding	driving	showdr.	total
	87	96	99	100	98	100	105

Teunis 332

stb199002891 marks allowed: 4,0%
 geb.: 8-3-1990 not allowed: 1,4%
 s.: Gerlof mgs mggs
 m.: Gertruda Lammert Tsjalling

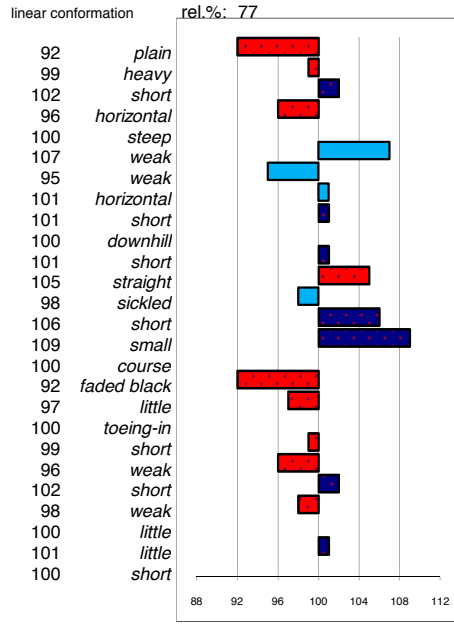


noble head
 light head-neck-conn.
 long neck length
 vertical neck position
 sloping shoulder
 tight back
 tight loins
 sloping croup shape
 long croup length
 upstanding body
 long length forearm
 standing under frontlegs
 straight hindlegs
 long pasterns
 large hooves
 dry bone quality
 jet black color
 much hair
 toeing-out walk
 long walk length
 powerful walk strength
 long trot length
 powerful trot strength
 much balance
 much suppleness
 tall size

major breakdown traits							
type	frame	f & l		walk	trot	total	
104	103	101		103	104	103	
ABFP							
rel.%	walk	trot	canter	riding	driving	showdr.	total
82	100	103	102	102	102	103	102

Warn 335

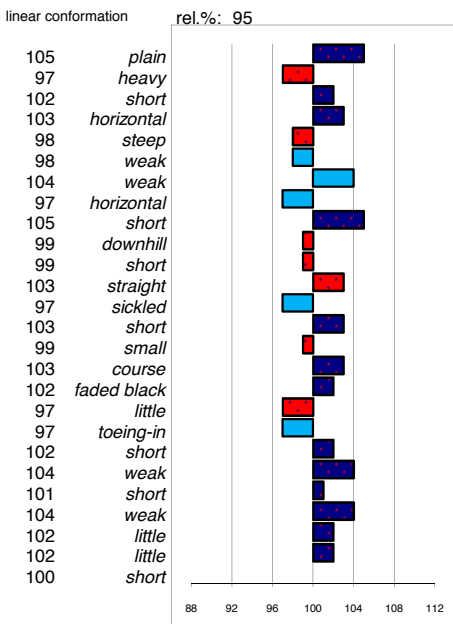
stb199118621 marks allowed: 9,9%
 geb.: 20-03-91 not allowed: 0,8%
 s.: Hearke mgs mggs
 m.: Mefrou Wessel Lammert



major breakdown traits							
type	frame	f & l		walk	trot	total	
96	99	101		100	99	99	
ABFP							
rel.%	walk	trot	canter	riding	driving	showdr.	total
0	0	0	0	0	0	0	0

Ulke 338

stb199000721 marks allowed: 4,4%
 geb.: 24-3-1990 not allowed: 1,4%
 s.: Tjimme mgs mggs
 m.: Fabiolaa Reitse Ygram

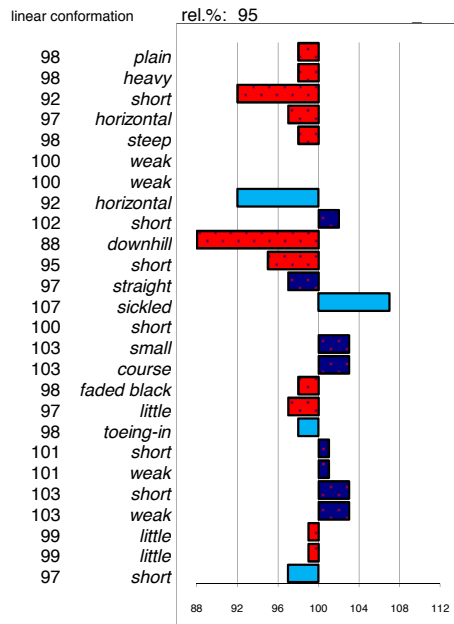


noble head
 light head-neck-conn.
 long neck length
 vertical neck position
 sloping shoulder
 tight back
 tight loins
 sloping croup shape
 long croup length
 upstanding body
 long length forearm
 standing under frontlegs
 straight hindlegs
 long pasterns
 large hooves
 dry bone quality
 jet black color
 much hair
 toeing-out walk
 long walk length
 powerful walk strength
 long trot length
 powerful trot strength
 much balance
 much suppleness
 tall size

major breakdown traits							
type	frame	f & l		walk	trot	total	
101	100	102		103	103	102	
ABFP							
rel.%	walk	trot	canter	riding	driving	showdr.	total
76	102	103	99	101	102	106	102

Anne 340

stb199200101 marks allowed: 1,4%
 geb.: 20-3-1992 not allowed: 0,3%
 s.: Reitse mgs mggs
 m.: Fimke Jochem Fokke



major breakdown traits							
type	frame	f & l		walk	trot	total	
97	98	102		103	103	101	
ABFP							
rel.%	walk	trot	canter	riding	driving	showdr.	total
71	105	98	99	99	100	99	100

Anton 343

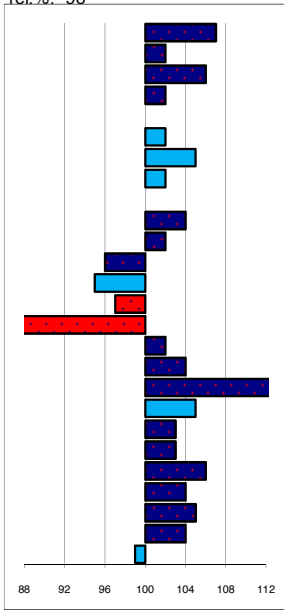
stb199217731
geb.: 18-6-1992
s.: Oege
m.: Iduna

marks allowed: 1,6%
not allowed: 0,1%
mgs Tjimme
mggs Ewoud

linear conformation

rel.%. 96

107 plain
102 heavy
106 short
102 horizontal
100 steep
102 weak
105 weak
102 horizontal
100 short
104 downhill
102 short
96 straight
95 sickled
97 short
83 small
102 course
104 faded black
113 little
105 toeing-in
103 short
103 weak
106 short
104 weak
105 little
104 little
99 short



noble
light
long
vertical
sloping
tight
tight
sloping
long
upstanding
long
standing under
straight
long
large
dry
jet black
much
toeing-out
long
powerful
long
powerful
much
much
tall

head
head-neck-conn.
neck length
neck position
shoulder
back
loins
croup shape
croup length
body
length forearm
frontlegs
hindlegs
pasterns
hooves
bone quality
color
hair
walk
walk length
walk strength
trot length
trot strength
balance
suppleness
size

major breakdown traits

type	frame	f & l	walk	trot	total
109	106	105	104	104	106
ABFP					
rel.%	walk	trot	canter	riding	driving
62	99	100	104	101	100
			showdr.		total
					101

Abel 344

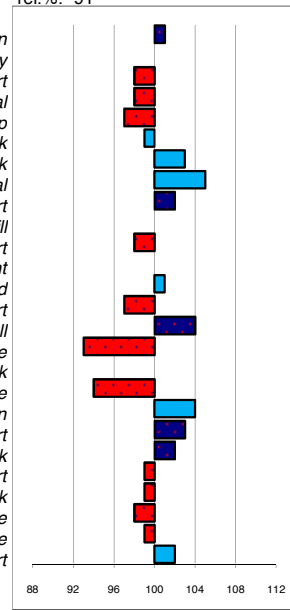
stb199208471
geb.: 18-4-1992
s.: Reitse
m.: Lisanne

marks allowed: 0,9%
not allowed: 0,9%
mgs Wessel
mggs Cobus

linear conformation

rel.%. 91

101 plain
100 heavy
98 short
98 horizontal
97 steep
99 weak
103 weak
105 horizontal
102 short
100 downhill
98 short
100 straight
101 sickled
97 short
104 small
93 course
100 faded black
94 little
104 toeing-in
103 short
102 weak
99 short
99 weak
98 little
99 little
102 short



noble
light
long
vertical
sloping
tight
tight
sloping
long
upstanding
long
standing under
straight
long
large
dry
jet black
much
toeing-out
long
powerful
long
powerful
much
much
tall

major breakdown traits

type	frame	f & l	walk	trot	total
98	100	97	100	99	99
ABFP					
rel.%	walk	trot	canter	riding	driving
67	101	103	104	103	102
			showdr.		total
					102

Brandus 345

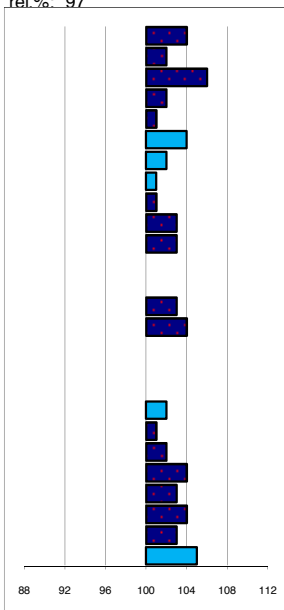
stb199209121
geb.: 13-5-1995
s.: Reitse
m.: Hoogheid

marks allowed: 6,2%
not allowed: 0,9%
mgs Oege
mggs Freark

linear conformation

rel.%. 97

104 plain
102 heavy
106 short
102 horizontal
101 steep
104 weak
102 weak
101 horizontal
101 short
103 downhill
103 short
100 straight
100 sickled
103 short
104 small
100 course
100 faded black
100 little
102 toeing-in
101 short
102 weak
104 short
103 weak
104 little
103 little
105 short



noble
light
long
vertical
sloping
tight
tight
sloping
long
upstanding
long
standing under
straight
long
large
dry
jet black
much
toeing-out
long
powerful
long
powerful
much
much
tall

head
head-neck-conn.
neck length
neck position
shoulder
back
loins
croup shape
croup length
body
length forearm
frontlegs
hindlegs
pasterns
hooves
bone quality
color
hair
walk
walk length
walk strength
trot length
trot strength
balance
suppleness
size

major breakdown traits

type	frame	f & l	walk	trot	total
103	104	102	102	102	103
ABFP					
rel.%	walk	trot	canter	riding	driving
83	98	105	104	104	103
			showdr.		total
					103

Abe 346

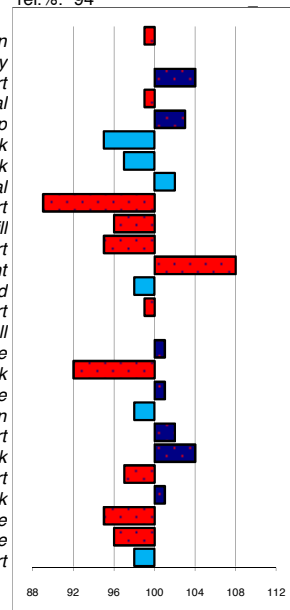
stb199206311
geb.: 27-4-1992
s.: Jillis
m.: Wina-Vrouck

marks allowed: 5,1%
not allowed: 1,4%
mgs Hearke
mggs Gabe

linear conformation

rel.%. 94

99 plain
100 heavy
104 short
99 horizontal
103 steep
95 weak
97 weak
102 horizontal
89 short
96 downhill
95 short
108 straight
98 sickled
99 short
109 small
101 course
92 faded black
101 little
98 toeing-in
102 short
104 weak
97 short
101 weak
95 little
96 little
98 short



noble
light
long
vertical
sloping
tight
tight
sloping
long
upstanding
long
standing under
straight
long
large
dry
jet black
much
toeing-out
long
powerful
long
powerful
much
much
tall

major breakdown traits

type	frame	f & l	walk	trot	total
99	98	101	103	100	100
ABFP					
rel.%	walk	trot	canter	riding	driving
82	99	98	99	99	99
			showdr.		total
					99

Fabe 348

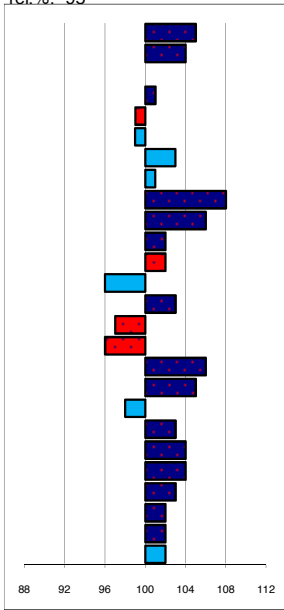
stb199311601
geb.: 27-3-1993
s.: Melle
m.: Kee

marks allowed: 0,9%
not allowed: 0,5%
mgs Romke
mggs Ulrig

linear conformation

rel.%: 95

105 plain
104 heavy
100 short
101 horizontal
99 steep
99 weak
103 weak
101 horizontal
108 short
106 downhill
102 short
102 straight
96 sickled
103 short
97 small
96 course
106 faded black
105 little
98 toeing-in
103 short
104 weak
104 short
103 weak
102 little
102 little
102 short



noble
light
long
vertical
sloping
shoulder
back
loins
sloping
long
upstanding
long
standing under
straight
long
large
dry
jet black
much
toeing-out
long
powerful
long
powerful
much
much
tall

head
head-neck-conn.
neck length
neck position
loins
croup shape
croup length
body
length forearm
frontlegs
hindlegs
pasterns
hooves
bone quality
color
hair
walk
walk length
walk strength
trot length
trot strength
balance
suppleness
size

major breakdown traits

type	frame	f & l		walk	trot	total
104	103	99	104	103	103	103
ABFP						
rel.%	walk	trot	canter	riding	driving	showdr.
83	99	101	100	101	104	102
						total
						101

Fetse 349

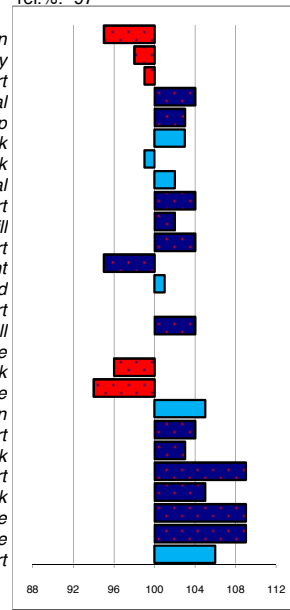
stb199303791
geb.: 3-4-1993
s.: Feitse
m.: Ordina B.

marks allowed: 2,1%
not allowed: 0,2%
mgs Djurre
mggs Reitse

linear conformation

rel.%: 97

95 plain
98 heavy
99 short
104 horizontal
103 steep
103 weak
99 weak
102 horizontal
104 short
102 downhill
104 short
95 straight
101 sickled
100 short
104 small
100 course
96 faded black
94 little
105 toeing-in
104 short
103 weak
109 short
105 weak
109 little
109 little
106 short



noble
light
long
vertical
sloping
tight
tight
sloping
long
upstanding
long
standing under
straight
long
large
dry
jet black
much
toeing-out
long
powerful
long
powerful
much
much
tall

major breakdown traits

type	frame	f & l		walk	trot	total
100	104	102	102	105	103	103
ABFP						
rel.%	walk	trot	canter	riding	driving	showdr.
87	102	103	98	100	102	105
						total
						101

Fêde 350

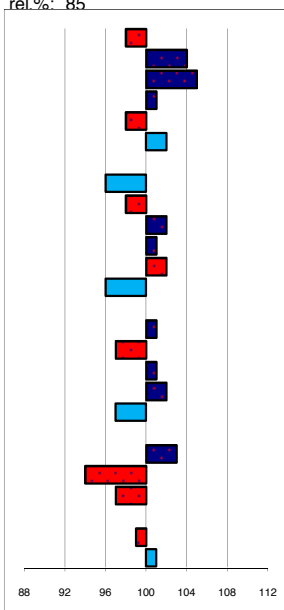
stb199301471
geb.: 11-4-1993
s.: Jelmer
m.: Ursel

marks allowed: 1,0%
not allowed: 0,0%
mgs Hearke
mggs Wessel

linear conformation

rel.%: 85

98 plain
104 heavy
105 short
101 horizontal
98 steep
102 weak
100 weak
96 horizontal
98 short
102 downhill
101 short
102 straight
96 sickled
100 short
101 small
97 course
101 faded black
102 little
97 toeing-in
100 short
103 weak
94 short
97 weak
100 little
99 little
101 short



noble
light
long
vertical
sloping
shoulder
back
loins
sloping
long
upstanding
long
standing under
straight
long
large
dry
jet black
much
toeing-out
long
powerful
long
powerful
much
much
tall

head
head-neck-conn.
neck length
neck position
loins
croup shape
croup length
body
length forearm
frontlegs
hindlegs
pasterns
hooves
bone quality
color
hair
walk
walk length
walk strength
trot length
trot strength
balance
suppleness
size

major breakdown traits

type	frame	f & l		walk	trot	total
101	102	98	101	98	100	96
ABFP						
rel.%	walk	trot	canter	riding	driving	showdr.
75	97	95	96	97	96	96
						total
						96

Erik 351

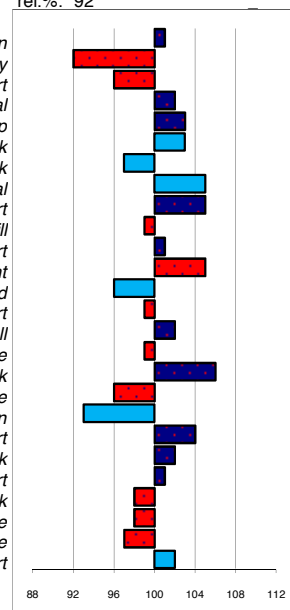
stb199320351
geb.: 28-4-1993
s.: Jelmer
m.: Stina

marks allowed: 8,1%
not allowed: 0,6%
mgs Frans
mggs Ygram

linear conformation

rel.%: 92

101 plain
92 heavy
96 short
102 horizontal
103 steep
103 weak
97 weak
105 horizontal
105 short
99 downhill
101 short
105 straight
96 sickled
99 short
102 small
99 course
106 faded black
96 little
93 toeing-in
104 short
102 weak
101 short
98 weak
98 little
97 little
102 short



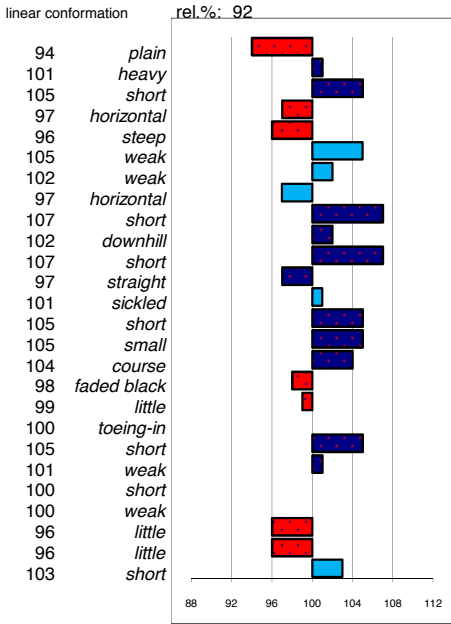
noble
light
long
vertical
sloping
tight
tight
sloping
long
upstanding
long
standing under
straight
long
large
dry
jet black
much
toeing-out
long
powerful
long
powerful
much
much
tall

major breakdown traits

type	frame	f & l		walk	trot	total
100	101	101	102	98	100	100
ABFP						
rel.%	walk	trot	canter	riding	driving	showdr.
80	103	98	102	101	100	98
						total
						101

Wander 352

stb199111221 marks allowed: 6,1%
 geb.: 24-6-1991 not allowed: 0,2%
 s.: Barteld mgs mggs
 m.: Nylke S. Djurre Mark

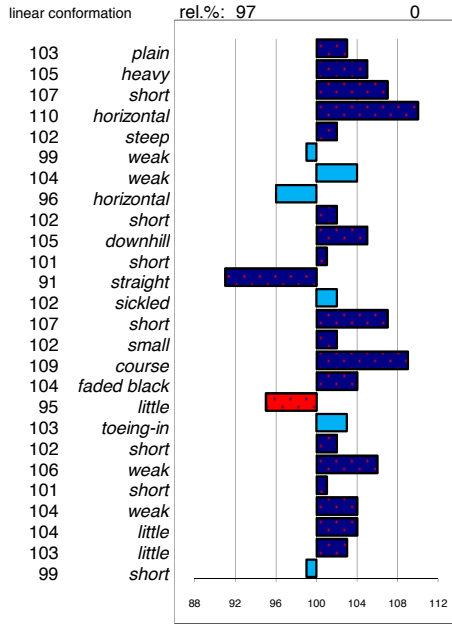


noble head
 light head-neck-conn.
 long neck length
 vertical neck position
 sloping shoulder
 tight back
 tight loins
 sloping croup shape
 long croup length
 upstanding body
 long length forearm
 standing under frontlegs
 straight hindlegs
 long pasterns
 large hooves
 dry bone quality
 jet black color
 much hair
 toeing-out walk
 long walk length
 powerful walk strength
 long trot length
 powerful trot strength
 much balance
 much suppleness
 tall size

major breakdown traits	type	frame	f & l	walk	trot	total		
	98	104	103	104	101	102		
ABFP	rel.%	walk	trot	canter	riding	driving	showdr.	total
	57	103	102	104	102	103	100	103

Folkert 353

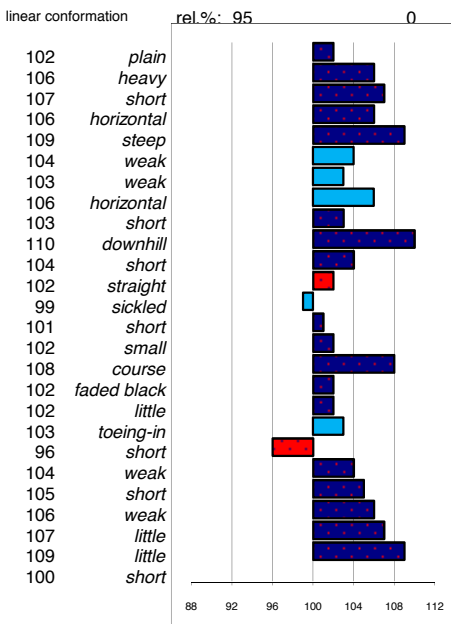
stb199302821 marks allowed: 5,0%
 geb.: 28-2-1993 not allowed: 2,8%
 s.: Feitse mgs mggs
 m.: Leentsje J. Wessel Hearke



major breakdown traits	type	frame	f & l	walk	trot	total		
	106	106	109	105	103	105		
ABFP	rel.%	walk	trot	canter	riding	driving	showdr.	total
	87	103	106	100	104	105	110	104

Heinse 354

stb199401891 marks allowed: 0,6%
 geb.: 5-3-1994 not allowed: 0,0%
 s.: Leffert mgs mggs
 m.: Ljutske Dimer Oege

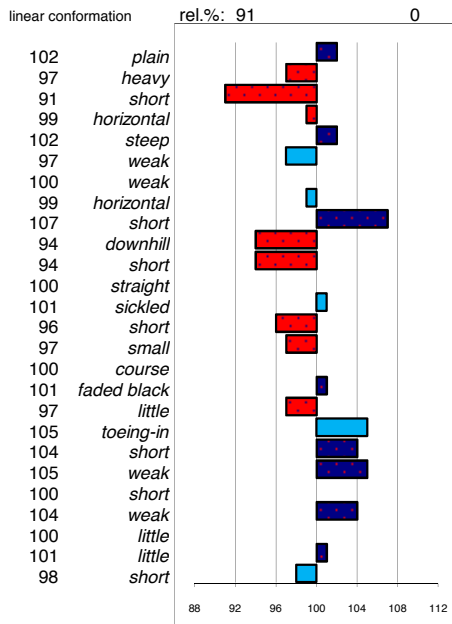


noble head
 light head-neck-conn.
 long neck length
 vertical neck position
 sloping shoulder
 tight back
 tight loins
 sloping croup shape
 long croup length
 upstanding body
 long length forearm
 standing under frontlegs
 straight hindlegs
 long pasterns
 large hooves
 dry bone quality
 jet black color
 much hair
 toeing-out walk
 long walk length
 powerful walk strength
 long trot length
 powerful trot strength
 much balance
 much suppleness
 tall size

major breakdown traits	type	frame	f & l	walk	trot	total		
	107	109	107	102	106	106		
ABFP	rel.%	walk	trot	canter	riding	driving	showdr.	total
	82	97	104	104	103	102	104	102

Gradus 356

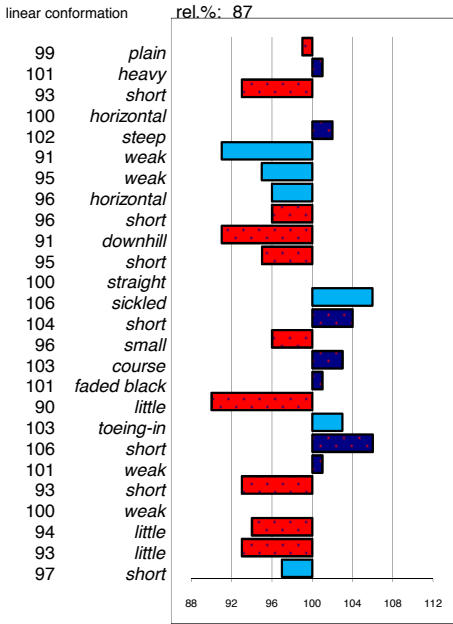
stb199420631 marks allowed: 3,4%
 geb.: 15-6-1994 not allowed: 0,7%
 s.: Reitse mgs mggs
 m.: Gretha Oege Mark



major breakdown traits	type	frame	f & l	walk	trot	total		
	102	101	99	104	102	102		
ABFP	rel.%	walk	trot	canter	riding	driving	showdr.	total
	80	106	99	99	100	102	100	101

Gerryt 360

stb199424481 marks allowed.: 8,4%
 born: 2-6-1994 not allowed.: 1,6%
 s.: Reitse mgs mggs
 m.: Leidy Doeke Ritske

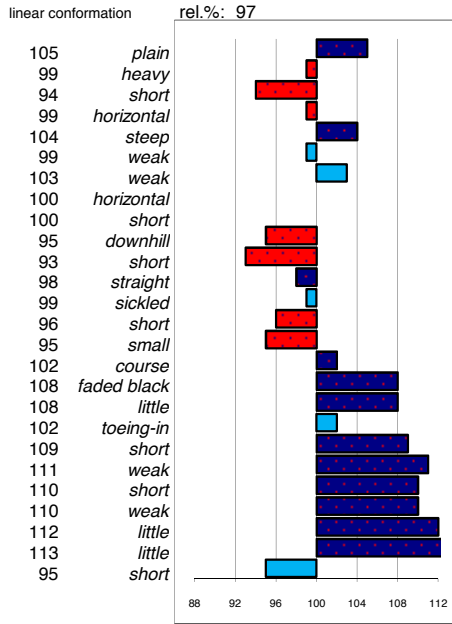


noble head
 light head-neck-conn.
 long neck length
 vertical neck position
 sloping shoulder
 tight back
 tight loins
 sloping croup shape
 long croup length
 upstanding body
 long length forearm
 standing under frontlegs
 straight hindlegs
 long pasterns
 large hooves
 dry bone quality
 jet black color
 much hair
 toeing-out walk
 long walk length
 powerful walk strength
 long trot length
 powerful trot strength
 much balance
 much suppleness
 tall size

major breakdown traits	type	frame	f & l			walk	trot	total	
	96	95	97			102	99	98	
ABFP	rel.%	walk	trot	canter	riding	driving	showdr.	efford	total
	77	105	99	105	102	101	99	102	

Jasper 366

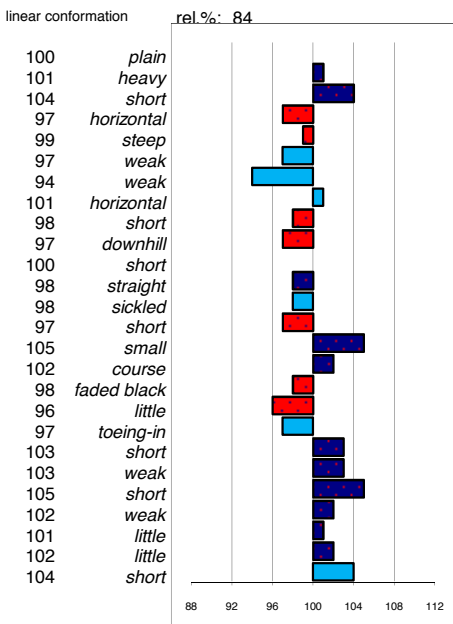
stb199520431 marks allowed.: 2,8%
 born: 20-5-1995 not allowed.: 0,3%
 s.: Olof mgs mggs
 m.: Antje ut de Franke Tsjalling



major breakdown traits	type	frame	f & l			walk	trot	total
	105	103	105			110	108	107
ABFP	rel.%	walk	trot	canter	riding	driving	showdr.	total
	85	108	110	108	110	109	108	109

Goffert 369

stb199413361 marks allowed.: 0,3%
 born: 14-06-94 not allowed.: 0,0%
 s.: Reitse mgs mggs
 m.: Nynke J. Cobus Ritske

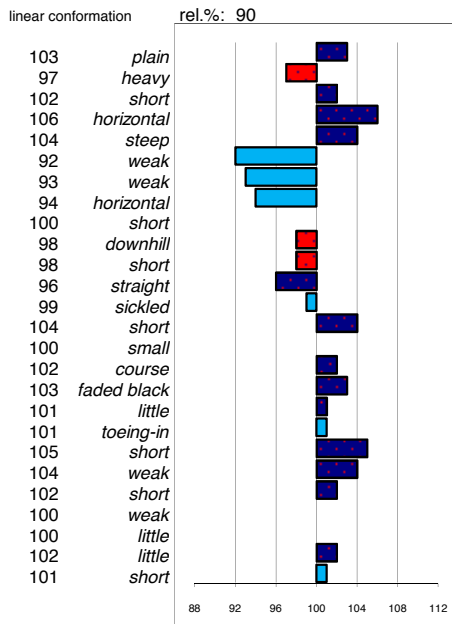


noble head
 light head-neck-conn.
 long neck length
 vertical neck position
 sloping shoulder
 tight back
 tight loins
 sloping croup shape
 long croup length
 upstanding body
 long length forearm
 standing under frontlegs
 straight hindlegs
 long pasterns
 large hooves
 dry bone quality
 jet black color
 much hair
 toeing-out walk
 long walk length
 powerful walk strength
 long trot length
 powerful trot strength
 much balance
 much suppleness
 tall size

major breakdown traits	type	frame	f & l			walk	trot	total
	97	99	101			102	101	100
ABFP	rel.%	walk	trot	canter	riding	driving	showdr.	total
	74	105	104	103	102	102	99	103

Karel 370

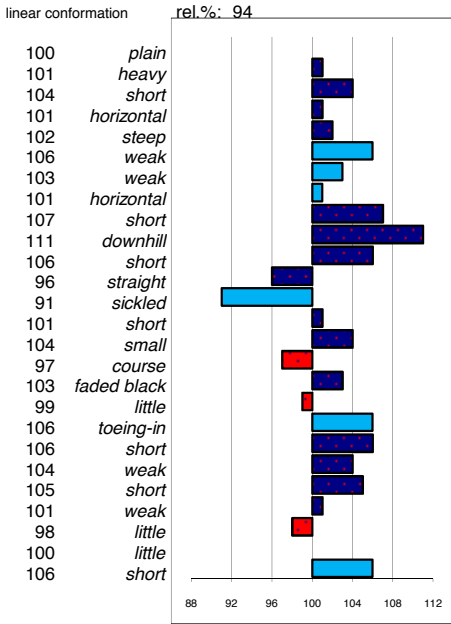
stb199510851 marks allowed.: 1,8%
 born: 26-2-95 not allowed.: 2,2%
 s.: Nammen mgs mggs
 m.: Fabiolaa Reitse Ygram



major breakdown traits	type	frame	f & l			walk	trot	total
	104	101	102			103	100	102
ABFP	rel.%	walk	trot	canter	riding	driving	showdr.	total
	76	104	105	101	102	105	109	104

Loike 371

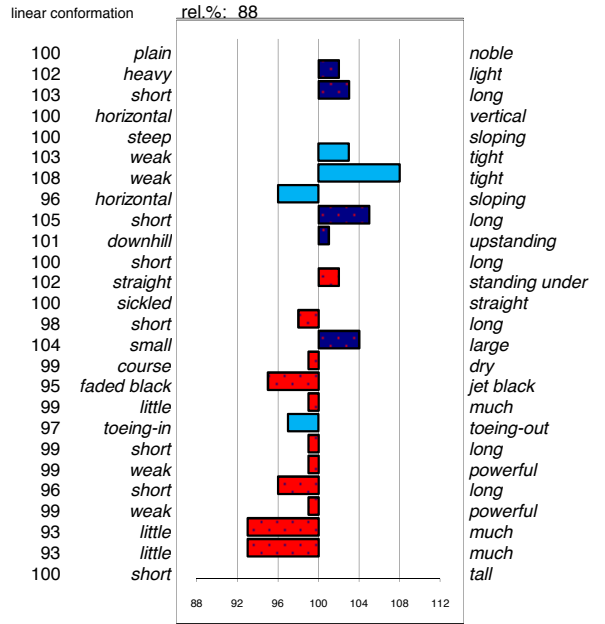
stb199516791 marks allowed.: 0,5%
 born: 30-6-95 not allowed.: 0,9%
 s.: Oege mgs mggs
 m.: Zwaantje F Reitse Oepke



major breakdown traits		f & l		walk	trot	total
type	frame					
102	106	100	105	101	103	
ABFP						
rel.%	walk	trot	canter	riding	driving	showdr.
77	101	96	99	98	100	101
						total
						99

Maiko 373

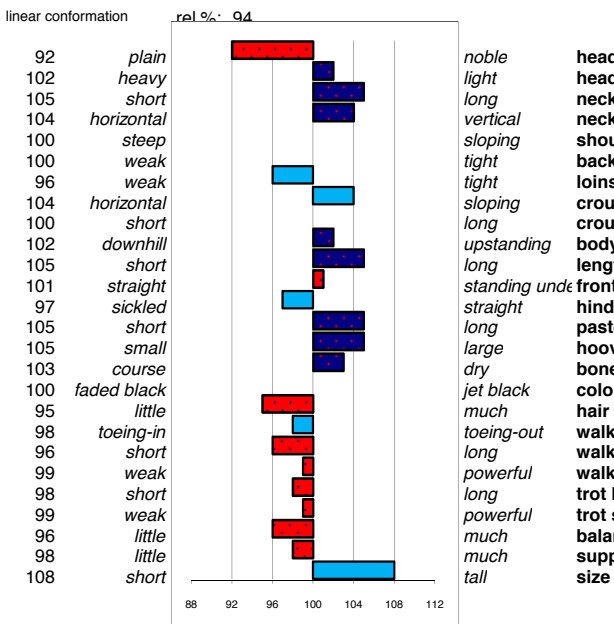
stb199605951 marks allowed.: 6,7%
 born: 08-02-96 not allowed.: 1,2%
 s.: Tsjerk mgs mggs
 m.: Wylster Barteld Tamme



major breakdown traits		f & l		walk	trot	total
type	frame					
99	103	101	98	99	100	
ABFP						
rel.%	walk	trot	canter	riding	driving	showdr.
77	103	103	107	107	104	101
						total
						104

Nanning 374

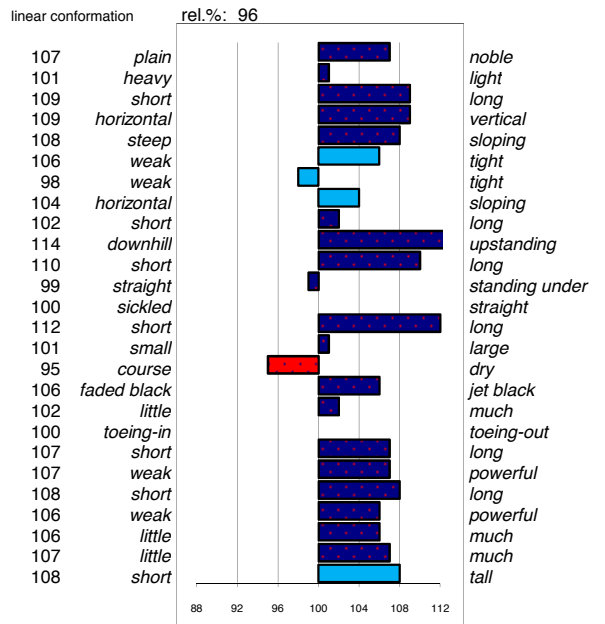
stb199617561 marks allowed.: 0,9%
 born: 02-05-96 not allowed.: 0,5%
 s.: Teunis mgs mggs
 m.: Sierda Feitse Oege



major breakdown traits		f & l		walk	trot	total
type	frame					
100	103	102	99	99	100	
ABFP						
rel.%	walk	trot	canter	riding	driving	showdr.
78	100	99	102	101	102	99
						total
						100

Onne 376

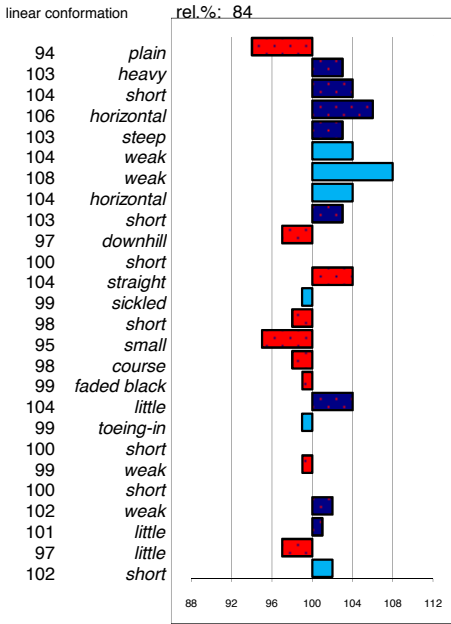
stb199619181 marks allowed.: 0,3%
 born: 20-06-96 not allowed.: 0,1%
 s.: Leffert mgs mggs
 m.: Ytsje Hearke Wessel



major breakdown traits		f & l		walk	trot	total
type	frame					
110	110	101	107	105	107	
ABFP						
rel.%	walk	trot	canter	riding	driving	showdr.
79	102	104	103	103	104	106
						total
						103

Monte 378

stb199623171 marks allowed.: #####
 born: 08-07-96 not allowed.: 2,7%
 s.: Teunis mgs mggs
 m.: Roos B. Hannes Mark

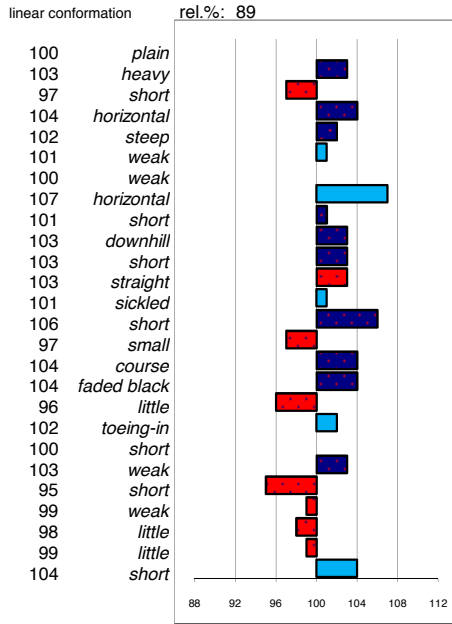


noble head
 light head-neck-conn.
 long neck length
 vertical neck position
 sloping shoulder
 tight back
 tight loins
 sloping croup shape
 long croup length
 upstanding body
 long length forearm
 standing under frontlegs
 straight hindlegs
 long pasterns
 large hooves
 dry bone quality
 jet black color
 much hair
 toeing-out walk
 long walk length
 powerful walk strength
 long trot length
 powerful trot strength
 much balance
 much suppleness
 tall size

major breakdown traits		f & l		walk	trot	total
type	frame					
101	101	97	98	100	100	100
ABFP						
rel.%	walk	trot	canter	riding	driving	showdr.
76	103	100	103	103	101	100

Sibald 380

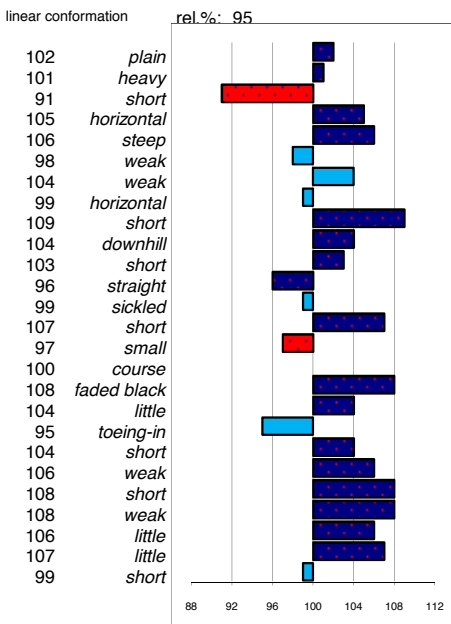
stb199709061 marks allowed.: 0,2%
 born: 23-03-97 not allowed.: 0,5%
 s.: Sierk mgs mggs
 m.: Berlinda H. Leffert Oege



major breakdown traits		f & l		walk	trot	total
type	frame					
101	99	103	102	98	101	101
ABFP						
rel.%	walk	trot	canter	riding	driving	showdr.
78	102	100	101	99	102	103

Sape 381

stb199732061 marks allowed.: 1,4%
 born: 06-07-97 not allowed.: 1,4%
 s.: Fabe mgs mggs
 m.: Olcha Feitse Naen

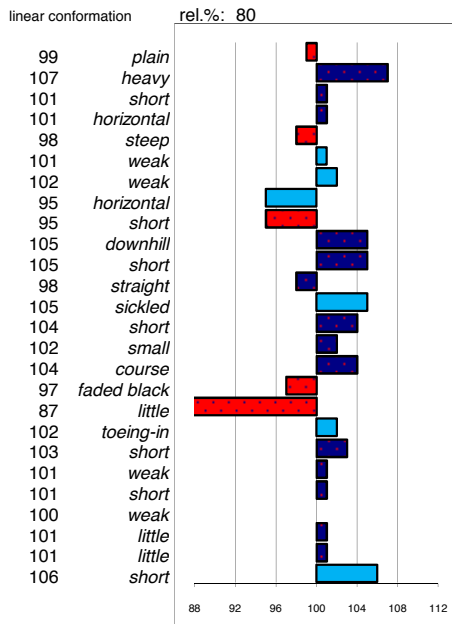


noble head
 light head-neck-conn.
 long neck length
 vertical neck position
 sloping shoulder
 tight back
 tight loins
 sloping croup shape
 long croup length
 upstanding body
 long length forearm
 standing under frontlegs
 straight hindlegs
 long pasterns
 large hooves
 dry bone quality
 jet black color
 much hair
 toeing-out walk
 long walk length
 powerful walk strength
 long trot length
 powerful trot strength
 much balance
 much suppleness
 tall size

major breakdown traits		f & l		walk	trot	total
type	frame					
106	105	104	104	106	105	105
ABFP						
rel.%	walk	trot	canter	riding	driving	showdr.
80	99	101	103	102	102	99

Ielke 382

stb199405751 marks allowed.: 1,2%
 born: 14-05-97 not allowed.: 0,3%
 s.: Nykle mgs mggs
 m.: Imkje Tsjalling Ewoud



major breakdown traits		f & l		walk	trot	total
type	frame					
96	101	103	102	102	101	101
ABFP						
rel.%	walk	trot	canter	riding	driving	showdr.
75	100	102	109	105	101	96

Olrik 383

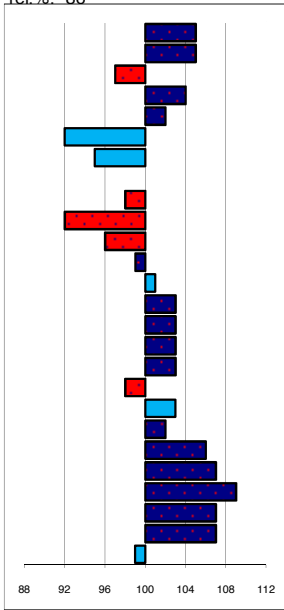
stb199615601
born: 13-04-96
s.: Jakob
m.: Yfke S.J.

marks allowed.: 4,6%
not allowed.: 1,7%
mgs Peke
mggs Oege

linear conformation

rel.%. 86

105 plain
105 heavy
97 short
104 horizontal
102 steep
92 weak
95 weak
100 horizontal
98 short
92 downhill
96 short
99 straight
101 sickled
103 short
103 small
103 course
103 faded black
98 little
103 toeing-in
102 short
106 weak
107 short
109 weak
107 little
107 little
99 short



noble
light
long
vertical
sloping
tight
tight
sloping
long
upstanding
long
standing under
straight
long
large
dry
jet black
much
toeing-out
long
powerful
long
powerful
much
much
tall

head
head-neck-conn.
neck length
neck position
shoulder
back
loins
croup shape
croup length
body
length forearm
frontlegs
hindlegs
pasterns
hooves
bone quality
color
hair
walk
walk length
walk strength
trot length
trot strength
balance
suppleness
size

major breakdown traits

type	frame	f & l	walk	trot	total
104	101	106	106	109	106
ABFP					
rel.%	walk	trot	canter	riding	driving
77	97	108	108	107	104
				showdr.	total
				104	105

Mintse 384

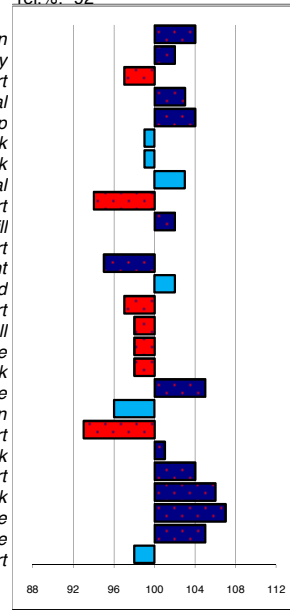
stb199633551
born: 03-03-96
s.: Leffert
m.: Jieldou

marks allowed.: 4,9%
not allowed.: 0,2%
mgs Lammert
mggs Freark

linear conformation

rel.%. 92

104 plain
102 heavy
97 short
103 horizontal
104 steep
99 weak
99 weak
103 horizontal
94 short
102 downhill
100 short
95 straight
102 sickled
97 short
98 small
98 course
98 faded black
105 little
96 toeing-in
93 short
101 weak
104 short
106 weak
107 little
105 little
98 short



noble
light
long
vertical
sloping
tight
tight
sloping
long
upstanding
long
standing under
straight
long
large
dry
jet black
much
toeing-out
long
powerful
long
powerful
much
much
tall

major breakdown traits

type	frame	f & l	walk	trot	total
106	103	101	98	106	103
ABFP					
rel.%	walk	trot	canter	riding	driving
75	100	105	107	106	105
				showdr.	total
				105	104

Teeuwis 389

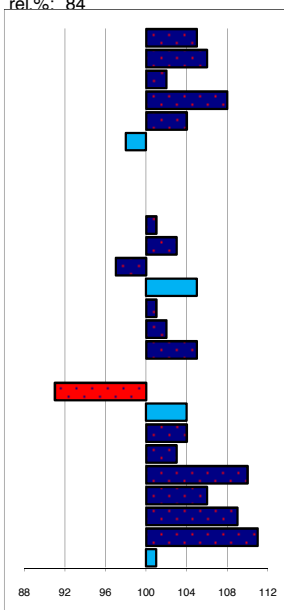
stb199804091
born: 14-03-98
s.: Fetse
m.: Anke

marks allowed.: 0,8%
not allowed.: 0,3%
mgs Reitse
mggs Doeke

linear conformation

rel.%. 84

105 plain
106 heavy
102 short
108 horizontal
104 steep
98 weak
100 weak
100 horizontal
100 short
101 downhill
103 short
97 straight
105 sickled
101 short
102 small
105 course
100 faded black
91 little
104 toeing-in
104 short
103 weak
110 short
106 weak
109 little
111 little
101 short



noble
light
long
vertical
sloping
tight
tight
sloping
long
upstanding
long
standing under
straight
long
large
dry
jet black
much
toeing-out
long
powerful
long
powerful
much
much
tall

head
head-neck-conn.
neck length
neck position
shoulder
back
loins
croup shape
croup length
body
length forearm
frontlegs
hindlegs
pasterns
hooves
bone quality
color
hair
walk
walk length
walk strength
trot length
trot strength
balance
suppleness
size

major breakdown traits

type	frame	f & l	walk	trot	total
104	105	103	103	106	104
ABFP					
rel.%	walk	trot	canter	riding	driving
77	103	105	104	105	105
				showdr.	total
				105	108

Uilbert 390

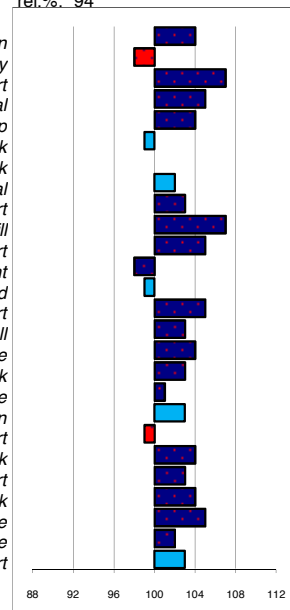
stb199809241
born: 05-04-98
s.: Sierk
m.: Famke D.

marks allowed.: 1,2%
not allowed.: 2,5%
mgs Leffert
mggs Lady Spray

linear conformation

rel.%. 94

104 plain
98 heavy
107 short
105 horizontal
104 steep
99 weak
100 weak
102 horizontal
103 short
107 downhill
105 short
98 straight
99 sickled
105 short
103 small
104 course
103 faded black
101 little
103 toeing-in
99 short
104 weak
103 short
104 weak
105 little
102 little
103 short



noble
light
long
vertical
sloping
tight
tight
sloping
long
upstanding
long
standing under
straight
long
large
dry
jet black
much
toeing-out
long
powerful
long
powerful
much
much
tall

major breakdown traits

type	frame	f & l	walk	trot	total
107	105	106	103	104	105
ABFP					
rel.%	walk	trot	canter	riding	driving
78	101	101	102	102	101
				showdr.	total
				103	102

Teade 392

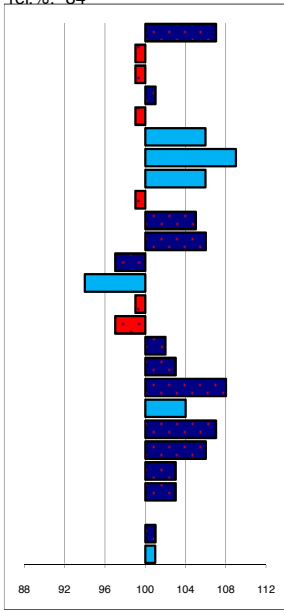
stb199818761
born: 14-05-98
s.: Anton
m.: Irma

marks allowed.: 3,9%
not allowed.: 0,3%
mgs mggs
Pike Ewoud

linear conformation

rel.%: 84

107 plain
99 heavy
99 short
101 horizontal
99 steep
106 weak
109 weak
106 horizontal
99 short
105 downhill
106 short
97 straight
94 sickled
99 short
97 small
102 course
103 faded black
108 little
104 toeing-in
107 short
106 weak
103 short
103 weak
100 little
101 little
101 short



noble
light
long
vertical
sloping
tight
tight
sloping
long
upstanding
long
standing under
straight
long
large
dry
jet black
much
toeing-out
long
powerful
long
powerful
much
much
tall

head
head-neck-conn.
neck length
neck position
shoulder
back
loins
croup shape
croup length
body
length forearm
frontlegs
hindlegs
pasterns
hooves
bone quality
color
hair
walk
walk length
walk strength
trot length
trot strength
balance
suppleness
size

major breakdown traits

type	frame	f & l	walk	trot	total
107	106	105	105	103	105
ABFP					
rel.%	walk	trot	canter	riding	driving
74	98	101	106	101	98
					showdr.
					100
					total
					101

Tonis 393

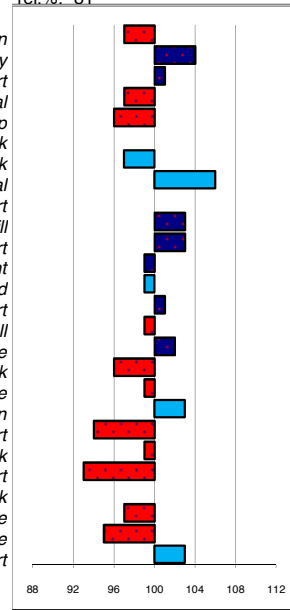
stb199819241
born: 29-04-98
s.: Tamme
m.: Sita

marks allowed.: 4,0%
not allowed.: 0,3%
mgs mggs
Oege Riens

linear conformation

rel.%: 81

97 plain
104 heavy
101 short
97 horizontal
96 steep
100 weak
97 weak
106 horizontal
100 short
103 downhill
103 short
99 straight
99 sickled
101 short
99 small
102 course
96 faded black
99 little
103 toeing-in
94 short
99 weak
93 short
100 weak
97 little
95 little
103 short



noble
light
long
vertical
sloping
tight
tight
sloping
long
upstanding
long
standing under
straight
long
large
dry
jet black
much
toeing-out
long
powerful
long
powerful
much
much
tall

major breakdown traits

type	frame	f & l	walk	trot	total
99	99	101	99	99	99
ABFP					
rel.%	walk	trot	canter	riding	driving
75	96	101	105	101	100
					showdr.
					102
					total
					101

Rik 396

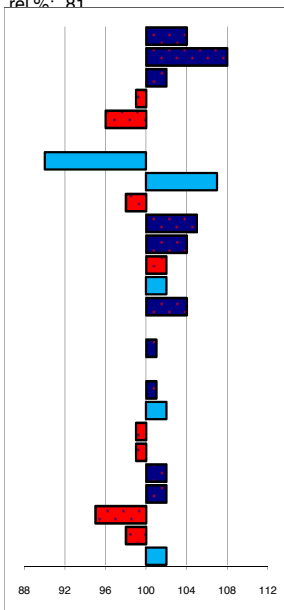
stb199725421
born: 16-05-97
s.: Oltman
m.: Edwarda

marks allowed.: 8,0%
not allowed.: 1,2%
mgs mggs
Reitse Hindrik

linear conformation

rel.%: 81

104 plain
108 heavy
102 short
99 horizontal
96 steep
100 weak
90 weak
107 horizontal
98 short
105 downhill
104 short
102 straight
102 sickled
104 short
100 small
101 course
101 faded black
101 little
102 toeing-in
99 short
99 weak
102 short
102 weak
95 little
98 little
102 short



noble
light
long
vertical
sloping
tight
tight
sloping
long
upstanding
long
standing under
straight
long
large
dry
jet black
much
toeing-out
long
powerful
long
powerful
much
much
tall

head
head-neck-conn.
neck length
neck position
shoulder
back
loins
croup shape
croup length
body
length forearm
frontlegs
hindlegs
pasterns
hooves
bone quality
color
hair
walk
walk length
walk strength
trot length
trot strength
balance
suppleness
size

major breakdown traits

type	frame	f & l	walk	trot	total
101	99	100	97	99	99
ABFP					
rel.%	walk	trot	canter	riding	driving
75	102	100	102	102	104
					showdr.
					102
					total
					102

Tsjalke 397

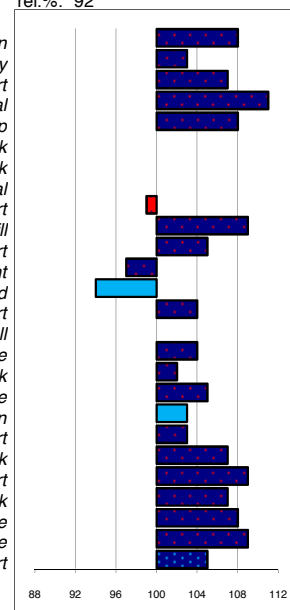
stb199821321
born: 27-04-98
s.: Leffert
m.: Selma

marks allowed.: 1,4%
not allowed.: 0,8%
mgs mggs
Doeke Tsjalling

linear conformation

rel.%: 92

108 plain
103 heavy
107 short
111 horizontal
108 steep
100 weak
100 weak
100 horizontal
99 short
109 downhill
105 short
97 straight
94 sickled
104 short
100 small
104 course
102 faded black
105 little
103 toeing-in
103 short
107 weak
109 short
107 weak
108 little
109 little
105 short



noble
light
long
vertical
sloping
tight
tight
sloping
long
upstanding
long
standing under
straight
long
large
dry
jet black
much
toeing-out
long
powerful
long
powerful
much
much
tall

major breakdown traits

type	frame	f & l	walk	trot	total
111	108	106	105	107	108
ABFP					
rel.%	walk	trot	canter	riding	driving
75	101	101	102	100	105
					showdr.
					108
					total
					102

Wobke 403

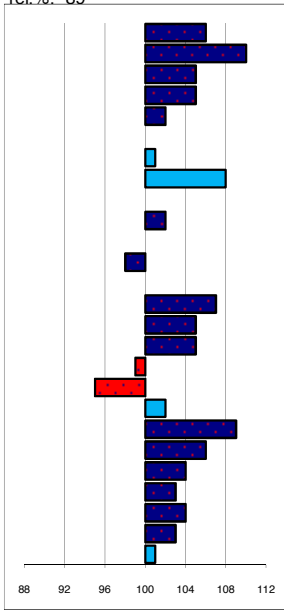
stb199901951
born: 26-02-99
s.: Fetse
m.: siuwke

marks allowed.: 4,1%
not allowed.: 0,6%
mgs Gaije
mggs Wessel

linear conformation

rel.%. 89

106 plain
110 heavy
105 short
105 horizontal
102 steep
100 weak
101 weak
108 horizontal
100 short
102 downhill
100 short
98 straight
100 sickled
107 short
105 small
105 course
99 faded black
95 little
102 toeing-in
109 short
106 weak
104 short
103 weak
104 little
103 little
101 short



noble
light
long
vertical
sloping
tight
tight
sloping
long
upstanding
long
standing under
straight
long
large
dry
jet black
much
toeing-out
long
powerful
long
powerful
much
much
tall

head
head-neck-conn.
neck length
neck position
shoulder
back
loins
croup shape
croup length
body
length forearm
frontlegs
hindlegs
pasterns
hooves
bone quality
color
hair
walk
walk length
walk strength
trot length
trot strength
balance
suppleness
size

major breakdown traits

type	frame	f & l	walk	trot	total
105	103	103	107	103	105
ABFP					
rel.%	walk	trot	canter	riding	driving
77	106	105	106	107	105
					showdr.
					104
					total
					106

Wikke 404

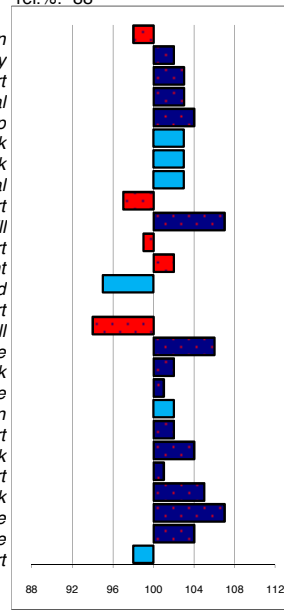
stb199903451
born: 02-03-99
s.: Ritse 322
m.: Anne richje T Gerlof

marks allowed.: 2,1%
not allowed.: 0,3%
mgs Gerlof
mggs Ritske

linear conformation

rel.%. 88

98 plain
102 heavy
103 short
103 horizontal
104 steep
103 weak
103 weak
103 horizontal
97 short
107 downhill
99 short
102 straight
95 sickled
100 short
94 small
106 course
102 faded black
101 little
102 toeing-in
102 short
104 weak
101 short
105 weak
107 little
104 little
98 short



noble
light
long
vertical
sloping
tight
tight
sloping
long
upstanding
long
standing under
straight
long
large
dry
jet black
much
toeing-out
long
powerful
long
powerful
much
much
tall

major breakdown traits

type	frame	f & l	walk	trot	total
102	105	105	104	105	104
ABFP					
rel.%	walk	trot	canter	riding	driving
76	99	103	97	101	100
					showdr.
					102
					total
					100

Rindert 406

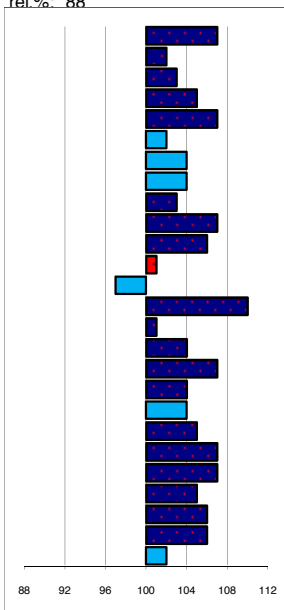
stb199717271
born: 16-05-97
s.: Brandus
m.: Elske

marks allowed.: 2,9%
not allowed.: 1,0%
mgs Jochem
mggs Freark

linear conformation

rel.%. 88

107 plain
102 heavy
103 short
105 horizontal
107 steep
100 weak
104 weak
104 horizontal
103 short
107 downhill
106 short
101 straight
97 sickled
110 short
101 small
104 course
107 faded black
104 little
104 toeing-in
105 short
107 weak
107 short
105 weak
106 little
106 little
102 short



noble
light
long
vertical
sloping
tight
tight
sloping
long
upstanding
long
standing under
straight
long
large
dry
jet black
much
toeing-out
long
powerful
long
powerful
much
much
tall

head
head-neck-conn.
neck length
neck position
shoulder
back
loins
croup shape
croup length
body
length forearm
frontlegs
hindlegs
pasterns
hooves
bone quality
color
hair
walk
walk length
walk strength
trot length
trot strength
balance
suppleness
size

major breakdown traits

type	frame	f & l	walk	trot	total
109	106	104	106	104	106
ABFP					
rel.%	walk	trot	canter	riding	driving
73	101	104	107	105	103
					showdr.
					108
					total
					104

Wierd 409

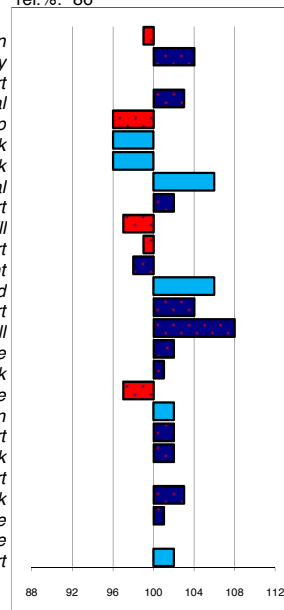
stb199938871
born: 29-06-99
s.: Folkert
m.: Tsjitske

marks allowed.: 6,5%
not allowed.: 0,5%
mgs Reitse
mggs Peke

linear conformation

rel.%. 86

99 plain
104 heavy
100 short
103 horizontal
96 steep
96 weak
96 weak
106 horizontal
102 short
97 downhill
99 short
98 straight
106 sickled
104 short
108 small
102 course
101 faded black
97 little
102 toeing-in
102 short
102 weak
100 short
103 weak
101 little
100 little
102 short



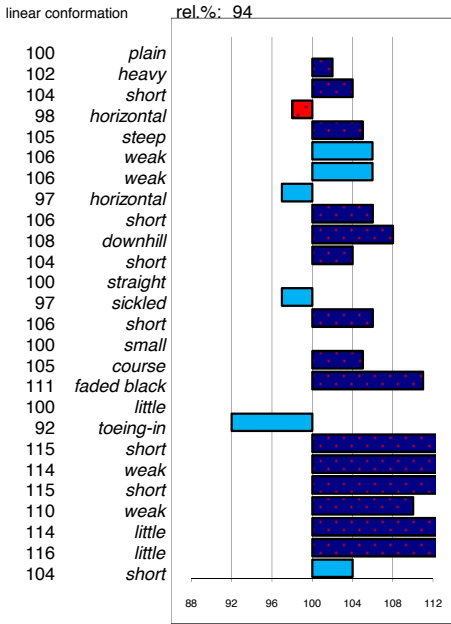
noble
light
long
vertical
sloping
tight
tight
sloping
long
upstanding
long
standing under
straight
long
large
dry
jet black
much
toeing-out
long
powerful
long
powerful
much
much
tall

major breakdown traits

type	frame	f & l	walk	trot	total
98	98	102	101	101	100
ABFP					
rel.%	walk	trot	canter	riding	driving
70	102	103	100	102	100
					showdr.
					105
					total
					102

Beart 411

stb200008071 marks allowed.: 1,7%
 born: 20-03-00 not allowed.: 0,7%
 s.: Jasper 366 mgs mggs
 m.: Setske F Feitse Dagho



noble
 light
 long
 vertical
 sloping
 shoulder
 back
 loins
 sloping
 long
 upstanding
 long
 standing under
 straight
 long
 large
 dry
 jet black
 much
 hair
 walk
 long
 powerful
 long
 powerful
 much
 much
 tall

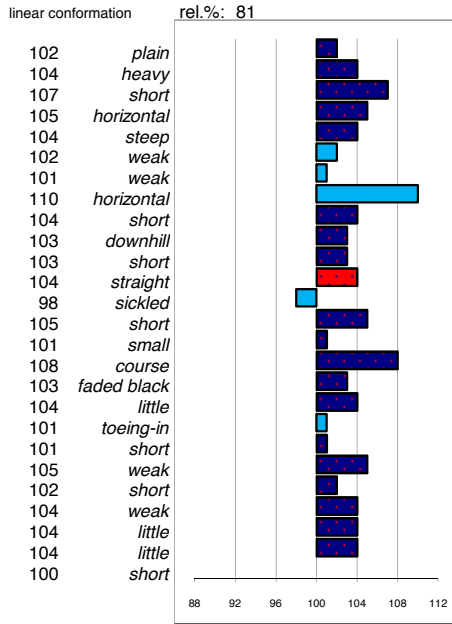
head
 head-neck-conn.
 neck length
 neck position
 shoulder
 back
 loins
 croup shape
 croup length
 body
 length forearm
 frontlegs
 hindlegs
 pasterns
 hooves
 bone quality
 color
 hair
 walk
 walk length
 walk strength
 trot length
 trot strength
 balance
 suppleness
 size

major breakdown traits

type	frame	f & l	walk	trot	total
103	109	106	114	109	108
ABFP					
rel.%	walk	trot	canter	riding	driving
79	112	108	108	107	107
			showdr.		total
			102		108

Bente 412

stb200017131 marks allowed.: 2,5%
 born: 25-04-00 not allowed.: 0,8%
 s.: Heitse mgs mggs
 m.: Lobke Y Nammen Jochem



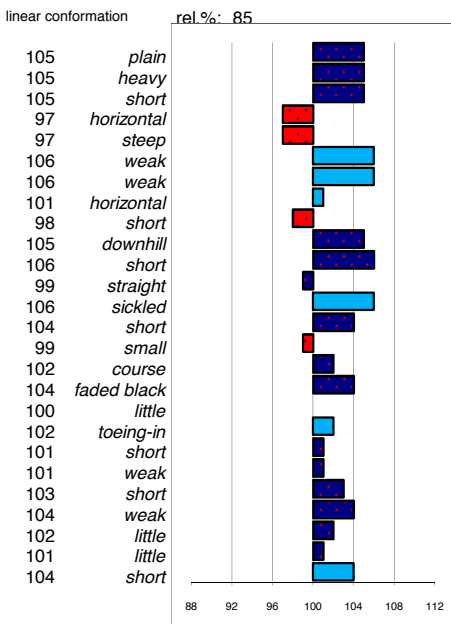
noble
 light
 long
 vertical
 sloping
 tight
 tight
 sloping
 long
 upstanding
 long
 standing under
 straight
 long
 large
 dry
 jet black
 much
 toeing-out
 long
 powerful
 long
 powerful
 much
 much
 tall

major breakdown traits

type	frame	f & l	walk	trot	total
105	104	105	105	103	104
ABFP					
rel.%	walk	trot	canter	riding	driving
74	101	104	104	102	103
			showdr.		total
			103		103

Brend 413

stb200020671 marks allowed.: 2,1%
 born: 18-04-00 not allowed.: 0,2%
 s.: Brandus 345 mgs mggs
 m.: Meta S Doeke Tijmme



noble
 light
 long
 vertical
 sloping
 shoulder
 back
 loins
 sloping
 long
 upstanding
 long
 standing under
 straight
 long
 large
 dry
 jet black
 much
 hair
 walk
 long
 powerful
 long
 powerful
 much
 much
 tall

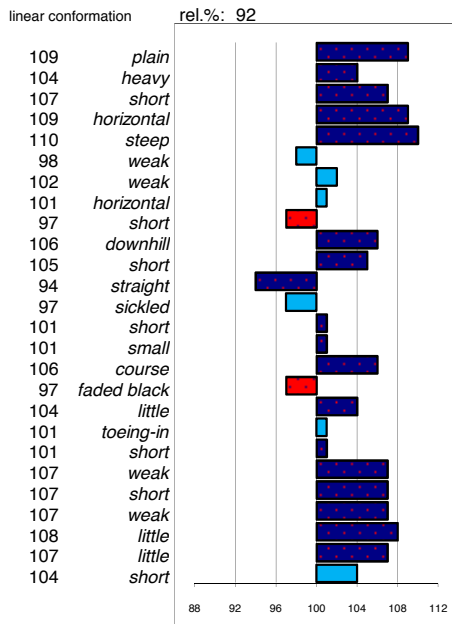
head
 head-neck-conn.
 neck length
 neck position
 shoulder
 back
 loins
 croup shape
 croup length
 body
 length forearm
 frontlegs
 hindlegs
 pasterns
 hooves
 bone quality
 color
 hair
 walk
 walk length
 walk strength
 trot length
 trot strength
 balance
 suppleness
 size

major breakdown traits

type	frame	f & l	walk	trot	total
102	105	103	100	102	102
ABFP					
rel.%	walk	trot	canter	riding	driving
74	97	104	109	103	101
			showdr.		total
			105		103

Andries 415

stb200037791 marks allowed.: 6,0%
 born: 13-06-00 not allowed.: 0,4%
 s.: Tsjerk 328 mgs mggs
 m.: Gitte Nykle Lammert



noble
 light
 long
 vertical
 sloping
 tight
 tight
 sloping
 long
 upstanding
 long
 standing under
 straight
 long
 large
 dry
 jet black
 much
 toeing-out
 long
 powerful
 long
 powerful
 much
 much
 tall

major breakdown traits

type	frame	f & l	walk	trot	total
111	107	107	107	106	108
ABFP					
rel.%	walk	trot	canter	riding	driving
76	101	100	100	99	103
			showdr.		total
			105		101

Aan 416

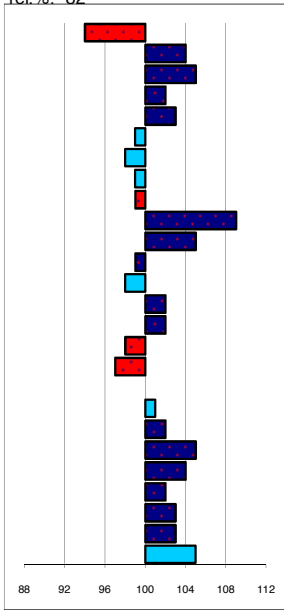
stb200044011
 born: 25-06-00
 s.: Abe 346
 m.: Dieke V

marks allowed.: 1,6%
 not allowed.: 0,0%
 mgs: Jurjen
 mggs: Wessel

linear conformation

rel.%.: 82

94 plain
 104 heavy
 105 short
 102 horizontal
 103 steep
 99 weak
 98 weak
 99 horizontal
 99 short
 109 downhill
 105 short
 99 straight
 98 sickled
 102 short
 102 small
 98 course
 97 faded black
 100 little
 101 toeing-in
 102 short
 105 weak
 104 short
 102 weak
 103 little
 103 little
 105 short



noble
 light
 long
 vertical
 sloping
 tight
 tight
 sloping
 long
 upstanding
 long
 standing under
 straight
 long
 large
 dry
 jet black
 much
 toeing-out
 long
 powerful
 long
 powerful
 much
 much
 tall

head
 head-neck-conn.
 neck length
 neck position
 shoulder
 back
 loins
 croup shape
 croup length
 body
 length forearm
 frontlegs
 hindlegs
 pasterns
 hooves
 bone quality
 color
 hair
 walk
 walk length
 walk strength
 trot length
 trot strength
 balance
 suppleness
 size

major breakdown traits

type	frame	f & l	walk	trot	total		
100	105	102	106	103	103		
ABFP							
rel.%	walk	trot	canter	riding	driving	showdr.	total
77	100	101	100	101	100	102	101

Arjen 417

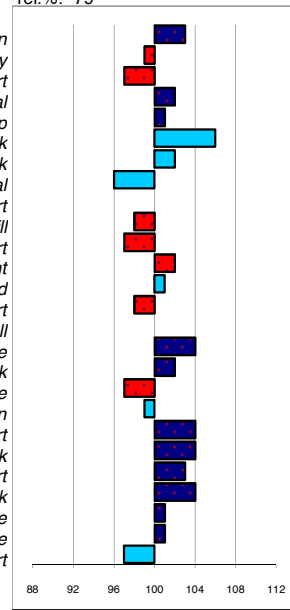
stb200009341
 born: 31-03-00
 s.: Erik 351
 m.: Femke v. H.

marks allowed.: 0,0%
 not allowed.: 0,0%
 mgs: Nikolaas
 mggs: Jochem

linear conformation

rel.%.: 79

103 plain
 99 heavy
 97 short
 102 horizontal
 101 steep
 106 weak
 102 weak
 96 horizontal
 100 short
 98 downhill
 97 short
 102 straight
 101 sickled
 98 short
 100 small
 104 course
 102 faded black
 97 little
 99 toeing-in
 104 short
 104 weak
 103 short
 104 weak
 101 little
 101 little
 97 short



noble
 light
 long
 vertical
 sloping
 tight
 tight
 sloping
 long
 upstanding
 long
 standing under
 straight
 long
 large
 dry
 jet black
 much
 toeing-in
 long
 powerful
 long
 powerful
 much
 much
 tall

major breakdown traits

type	frame	f & l	walk	trot	total		
103	102	104	104	103	103		
ABFP							
rel.%	walk	trot	canter	riding	driving	showdr.	total
75	102	97	101	100	100	100	100

Eibert 419

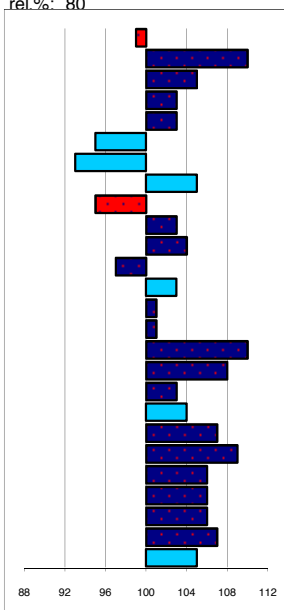
stb200103511
 born: 01-03-01
 s.: Folkert 353
 m.: Joyke v. G.

marks allowed.: 2,4%
 not allowed.: 0,3%
 mgs: Reitse
 mggs: Lammert

linear conformation

rel.%.: 80

99 plain
 110 heavy
 105 short
 103 horizontal
 103 steep
 95 weak
 93 weak
 105 horizontal
 95 short
 103 downhill
 104 short
 97 straight
 103 sickled
 101 short
 101 small
 110 course
 108 faded black
 103 little
 104 toeing-in
 107 short
 109 weak
 106 short
 106 weak
 106 little
 107 little
 105 short



noble
 light
 long
 vertical
 sloping
 tight
 tight
 sloping
 long
 upstanding
 long
 standing under
 straight
 long
 large
 dry
 jet black
 much
 toeing-out
 long
 powerful
 long
 powerful
 much
 much
 tall

head
 head-neck-conn.
 neck length
 neck position
 shoulder
 back
 loins
 croup shape
 croup length
 body
 length forearm
 frontlegs
 hindlegs
 pasterns
 hooves
 bone quality
 color
 hair
 walk
 walk length
 walk strength
 trot length
 trot strength
 balance
 suppleness
 size

major breakdown traits

type	frame	f & l	walk	trot	total		
102	103	105	107	106	105		
ABFP							
rel.%	walk	trot	canter	riding	driving	showdr.	total
76	105	106	106	106	105	105	106

Doaitsen 420

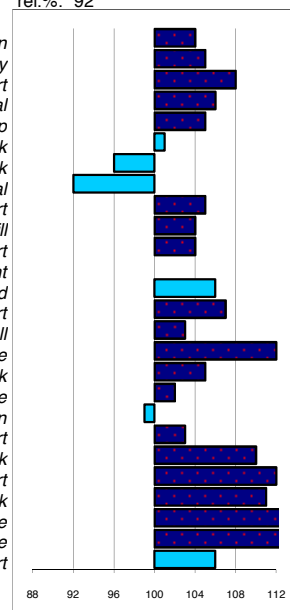
stb200106691
 born: 23-02-01
 s.: Wander
 m.: Wieke

marks allowed.: 2,8%
 not allowed.: 0,1%
 mgs: Reitse
 mggs: Tsjalling

linear conformation

rel.%.: 92

104 plain
 105 heavy
 108 short
 106 horizontal
 105 steep
 101 weak
 96 weak
 92 horizontal
 105 short
 104 downhill
 104 short
 100 straight
 106 sickled
 107 short
 103 small
 112 course
 105 faded black
 102 little
 99 toeing-in
 103 short
 110 weak
 112 short
 111 weak
 116 little
 116 little
 106 short



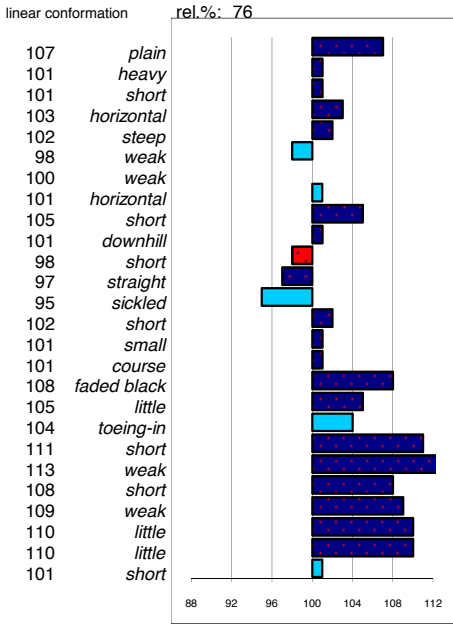
noble
 light
 long
 vertical
 sloping
 tight
 tight
 sloping
 long
 upstanding
 long
 standing under
 straight
 long
 large
 dry
 jet black
 much
 toeing-out
 long
 powerful
 long
 powerful
 much
 much
 tall

major breakdown traits

type	frame	f & l	walk	trot	total		
107	108	110	107	110	108		
ABFP							
rel.%	walk	trot	canter	riding	driving	showdr.	total
72	106	105	105	104	106	104	105

Dries 421

stb200116191 marks allowed.: 0,4%
 born: 17-04-01 not allowed.: 0,8%
 s.: Jasper 366 mgs mggs
 m.: Hiltse f. N. Hearke Oege



noble
 light
 long
 vertical
 sloping
 sloping
 tight
 tight
 sloping
 long
 upstanding
 long
 standing under
 straight
 long
 large
 dry
 jet black
 much
 toeing-out
 long
 powerful
 long
 powerful
 much
 much
 tall

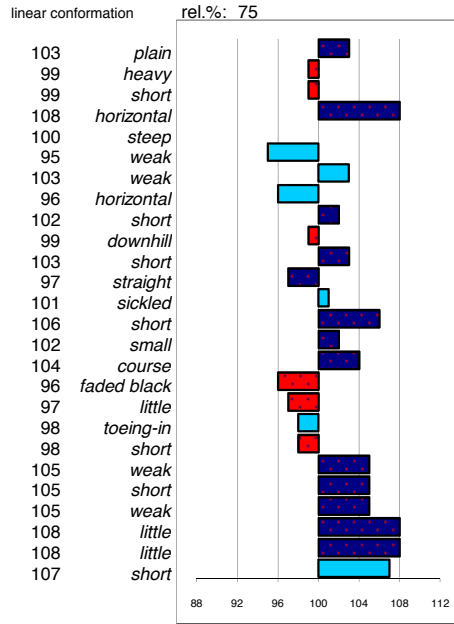
head
 head-neck-conn.
 neck length
 neck position
 shoulder
 back
 loins
 croup shape
 croup length
 body
 length forearm
 frontlegs
 hindlegs
 pasterns
 hooves
 bone quality
 color
 hair
 walk
 walk length
 walk strength
 trot length
 trot strength
 balance
 suppleness
 size

major breakdown traits

type	frame	f & l	walk	trot	total
108	107	103	112	107	108
ABFP					
rel.%	walk	trot	canter	riding	driving
73	110	111	110	111	109
					107
					110

Feike 395

stb199306571 marks allowed.: 5,4%
 born: 09-04-93 not allowed.: 0,4%
 s.: Feitse 293 mgs mggs
 m.: Jelsje Naen Ritske



noble
 light
 long
 vertical
 sloping
 sloping
 tight
 tight
 sloping
 long
 upstanding
 long
 standing under
 straight
 long
 large
 dry
 jet black
 much
 toeing-out
 long
 powerful
 long
 powerful
 much
 much
 tall

major breakdown traits

type	frame	f & l	walk	trot	total
106	106	105	103	104	105
ABFP					
rel.%	walk	trot	canter	riding	driving
0	0	0	0	0	0
					0
					0



BESCHERMVROUWE
H.M. KONINGIN BEATRIX

KONINKLIJKE VERENIGING “HET FRIESCH PAARDEN-STAMBOEK”

OPRIJLAAN 1 • 9205 BZ DRACHTEN
POSTBUS 624 • 9200 AP DRACHTEN
TEL. +31 (0)512 52 38 88 • FAX. +31 (0)512 53 21 46
E-MAIL: MAIL@FPS-STUDBOOK.COM
INTERNET: WWW.FPS-STUDBOOK.COM